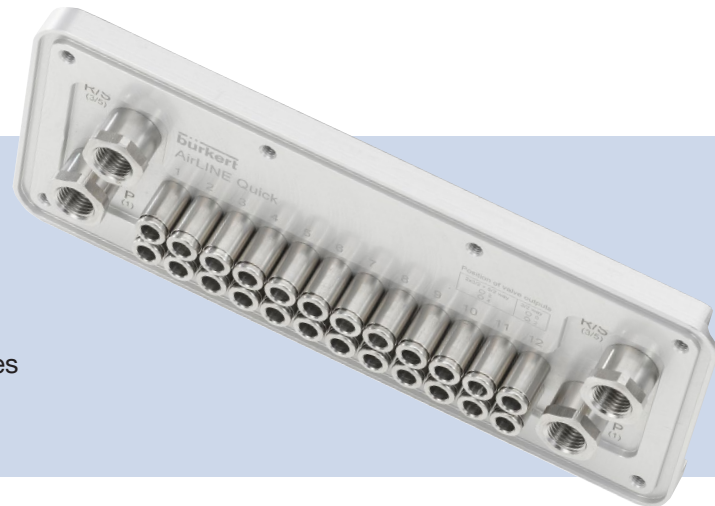


EPS 21 ATEX 1 079 U / IECEx EPS 21.0025U AirLINE Quick Type MP18

Control cabinet base adapter for
valve islands 8640, 8644 and 8647

Schaltschrankboden-Adaption
für die Ventilinseln 8640, 8644 und 8647

Adaptation du socle de l'armoire de commande pour les
terminaux de distributeurs 8640, 8644 et 8647



Operating Instructions

Bedienungsanleitung
Manuel d'utilisation



We reserve the right to make technical changes without notice.
Technische Änderungen vorbehalten.
Sous réserve de modifications techniques.

© Bürkert Werke GmbH & Co. KG, 2021

Operating Instructions 2111/00_EU-ML_00815401 / Original DE

MAN 1000505944 EN Version: -Status: RL (released | freigegeben) printed: 24.05.2022

1	OPERATING INSTRUCTIONS FOR USE IN POTENTIALLY EXPLOSIVE ATMOSPHERES	3
1.1	Definition of terms	3
1.2	Means of representation.....	4
2	INTENDED USE	4
3	SAFETY INSTRUCTIONS IN THE POTENTIALLY EXPLOSIVE ATMOSPHERE.....	5
4	EXPLOSION PROTECTION APPROVAL.....	6
5	TECHNICAL DATA	6
5.1	Type label (example).....	6
6	INSTALLATION	7

1 OPERATING INSTRUCTIONS FOR USE IN POTENTIALLY EXPLOSIVE ATMOSPHERES

(ATEX Directive 2014/34/EU)

If the AirLINE Quick Type MP18 control cabinet base adapter is used in a potentially explosive atmosphere, the instructions in these operating instructions must be observed.

Keep these instructions in a location which is easily accessible to every user and make them available to every new owner of the device.

Important safety information!

- Read these instructions carefully. Note in particular the chapters "Intended use" and "Special safety instructions".
- These operating instructions must be read, understood and observed.



The operating instructions for valve islands Types 8640, 8644 and 8647 can be found on the Internet at:

country.burkert.com

1.1 Definition of terms

In these instructions, the term "device" is used to refer to the AirLINE Quick Type MP18 control cabinet base adapter.

1.2 Means of representation



DANGER

Warns of an immediate danger.

- ▶ Failure to observe will result in death or serious injuries.



WARNING

Warns of a potentially hazardous situation.

- ▶ Failure to observe these instructions may result in serious injuries or death.



CAUTION

Warns of a potential danger.

- ▶ Failure to observe may result in moderate or minor injuries.

NOTE

Warns of damage.



Important tips and recommendations.



Refers to information in these operating instructions or in other documentation.

- ▶ Designates instructions to avoid danger.
- Indicates a procedure you need to carry out.

2 INTENDED USE

The control cabinet base adapter AirLINE Quick Type MP18 is designed for mounting valve island Types 8640, 8644 and 8647 in the control cabinet wall or in control cabinet base. It serves as an outer cover for the control cabinet recesses.

AirLINE Quick Type MP18 is approved for use in explosion group II, category 2G eb IIC Gb and category 2D Ex tb IIIC Db (see information on the type label).

- ▶ The ambient temperature of the AirLINE Quick flange plate must be between 0 and 55 °C. The permissible ambient temperatures of the combined valve island must also be taken into account.
- ▶ Install the device in a suitable control cabinet or housing.
- ▶ Prerequisites for safe and error-free operation include correct transportation, correct storage, installation, start-up, operation and maintenance.
- ▶ To use the device, observe the permitted data, operating conditions and application conditions. These specifications can be found in the contract documents, the operating instructions and on the type label.
- ▶ Use the device only in conjunction with third-party devices and components recommended or approved by Bürkert.
- ▶ Use the device only when it is in perfect condition.
- ▶ Use the device only as intended. Non-intended use of the device may be dangerous to people, nearby equipment and the environment.

The following must be ensured for systems in the explosion-risk area that are used in a housing (degree of protection at least IP54):

- ▶ The control cabinet must be approved for use in the potentially explosive atmosphere.
- ▶ The internal temperature of the control cabinet must not exceed the maximum permitted ambient temperature for the device.

3 SAFETY INSTRUCTIONS IN THE POTENTIALLY EXPLOSIVE ATMOSPHERE

To avoid the risk of explosion, the safety instructions in these operating instructions and the safety instructions in the operating instructions for the valve island must be observed.



WARNING

Risk of injury due to improper installation.

- ▶ Only trained specialist personnel may carry out assembly and disassembly work.
- ▶ Perform installation work using suitable tools only.



General hazardous situations.

To prevent injuries, observe the following:

- ▶ Operate the device only when it is in perfect condition and in accordance with the operating instructions.
- ▶ Observe applicable safety regulations (also national safety regulations) as well as the general rules of technology during setup and operation.
- ▶ Do not repair the device, but replace it with an equivalent device. Repairs may be carried out by the manufacturer only.
- ▶ Do not place the device under mechanical stress (e.g. by placing objects on it or standing on it).
- ▶ Do not subject the device to mechanical and/or thermal stresses/influences which exceed the limits described in the operating instructions.

4 EXPLOSION PROTECTION APPROVAL

The explosion protection approval is only valid if you use the modules and components approved by Bürkert as described in these operating instructions.

The devices may be used only in combination with the valve island types approved by Bürkert, otherwise the explosion protection approval will expire.

In the event of unauthorised changes to the system, modules or components, the explosion protection approval will also expire.

The type examination certificates

EPS 21 ATEX 1 079 U

IECEX EPS 21.0025U

were issued by

Bureau Veritas Consumer Products Services Germany GmbH.

Production is audited by the PTB (CE0102).

5 TECHNICAL DATA

To avoid the risk of explosion, the technical data in these operating instructions must be observed.

5.1 Type label (example)

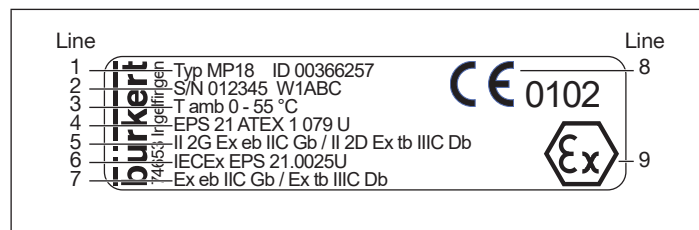


Fig. 1: Example of a type label for Type MP18

Line	Description	Specification
1	Device name	Type MP18
1	Order number Type MP18	ID 00366257
2	Serial number	S/N 012345
2	Manufacture date coded	W1ABC
3	Ambient temperature range	T amb 0 ... 55 °C
4	ATEX approval number	EPS 21 ATEX 1 079 U
5	Marking Ex protection ATEX gas/dust	II 2G Ex eb IIC Gb / II 2D Ex tb IIIC Db
6	Certificate number IECEX	IECEX EPS 21.0025U

Line	Description	Specification
7	Marking Ex protection IECEx gas/dust	Ex eb IIC Gb / Ex tb IIIC Db
8	CE marking	
9	Ex logo	

Tab. 1: Description of the type label data Type MP18

6 INSTALLATION



Please observe the detailed installation instructions in the operating instructions of the corresponding valve island.

You can find the operating instructions specifying the valve island type at: country.burkert.com

For installation of the AirLINE Quick, a recess must be provided on the enclosure floor. The dimensions of the recess can be found in “[Fig. 2: Flange pattern dimensions](#)” Page 8.

The recess can be done with a laser or a punch.

NOTE

The recess on the control cabinet must be burr-free so that the seal between the AirLINE Quick and the control cabinet is not damaged.

- Place the seal between the AirLINE Quick and the control cabinet in the groove of the AirLINE Quick metal plate without damaging it.
- Place the valve island in the control cabinet in the prepared recess.
- Attach the stabilising plate from the outside and attach it with M5x10 screws. Observe a tightening torque of 2.0 Nm.

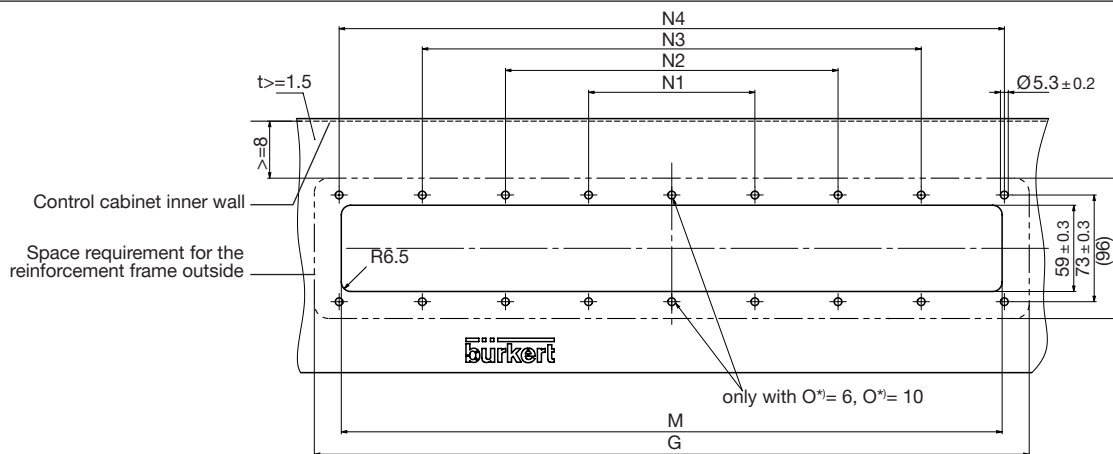


Fig. 2: Flange pattern dimensions

Variant		M	N1	N2	N3	N4	O (number of holes)	G
AirLINE Quick 8640, 8644 and 8647	4-fold	111 ±0.4	114 ±0.4	-	-	-	6	148
	8-fold	155 ±0.4	54 ±0.3	158 ±0.4	-	-	8	192
	12-fold	199 ±0.4	68 ±0.3	202 ±0.4	-	-	8	236
	16-fold	243 ±0.4	123 ±0.4	246 ±0.4	-	-	10	280
	24-fold	331 ±0.4	66 ±0.3	200 ±0.4	334 ±0.4	-	12	368
AirLINE Quick 8644 and 8647	16-fold with intermediate feed	276 ±0.4	140 ±0.4	279 ±0.4	-	-	10	313
	24-fold with intermediate feed	364 ±0.4	73 ±0.3	219 ±0.4	367 ±0.4	-	12	401

*) O = Number of holes

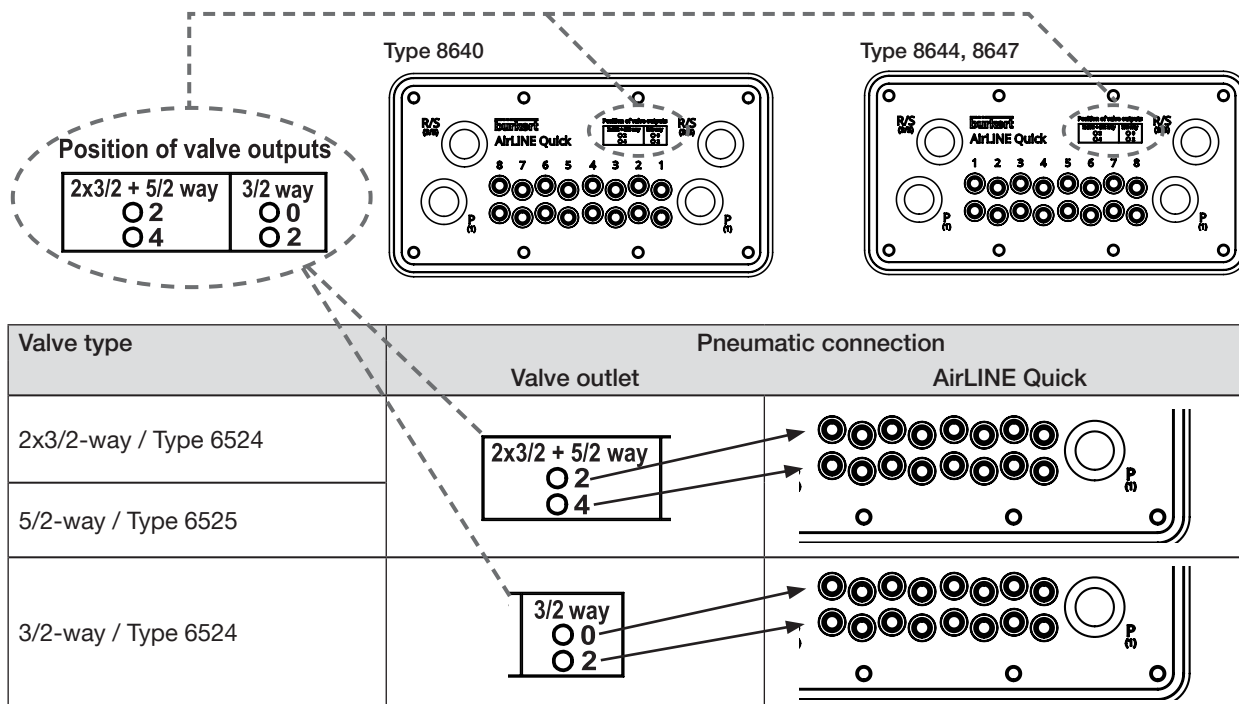


Fig. 3: Assignment of the pneumatic ports

www.burkert.com