



Check valve for water and air

- Brass or stainless steel housing
- Inner parts in stainless steel



Product variants described in the data sheet may differ from the product presentation and description.

Type description

Check valve for horizontal or vertical installation.

Table of contents

1. General technical data	3
1.1. Heavy design	3
1.2. Light design	3
1.3. Angle seat design	4
2. Approvals and conformities	4
2.1. General notes	4
2.2. Conformity	4
2.3. Standards	4
3. Materials	4
3.1. Bürkert resistApp	4
4. Dimensions	4
5. Ordering information	4
5.1. Bürkert eShop	5
5.2. Bürkert product filter	5
5.3. Ordering chart	5
Brass body, heavy design	5
Brass body, light design	6
Stainless steel body, angle seat design	6

DTS 1000194806 EN Version: H Status: RL (released | freigegeben | valide) printed: 27.01.2026

1. General technical data

Note:

Other variants on request

1.1. Heavy design

Product properties	
Dimensions	Further information can be found in chapter "4. Dimensions" on page 4.
Material	
Seal	NBR
Body	Pressed brass CW 617 N
Spring	Stainless steel
Valve cone	Polyamide (PA)
Nominal diameter	DN 10...40
Medium data	
Medium temperature	- 20 °C...+ 100 °C
Performance data	
Nominal pressure	Further information can be found in chapter "Brass body, heavy design" on page 5.
Opening pressure ¹⁾	0.02 bar
Environment and installation	
Installation position	Horizontal or vertical

1) Pressure data: overpressure to atmospheric pressure

1.2. Light design

Product properties	
Dimensions	Further information can be found in chapter "4. Dimensions" on page 4.
Material	
Seal	NBR
Body	Pressed brass CW 617 N
Spring	Stainless steel
Valve cone	Polyamide (PA)
Nominal diameter	DN 10...100
Medium data	
Medium temperature	Max. +100 °C
Performance data	
Nominal pressure	Further information can be found in chapter "Brass body, light design" on page 6.
Opening pressure ¹⁾	0.02 bar
Environment and installation	
Installation position	Horizontal or vertical

1) Pressure data: overpressure to atmospheric pressure

1.3. Angle seat design

Product properties	
Dimensions	Further information can be found in chapter “4. Dimensions” on page 4.
Material	
Seal	PTFE
Body	Stainless steel 1.4408
Nominal diameter	DN 8...50
Medium data	
Medium temperature	- 20 °C...+ 200 °C
Performance data	
Nominal pressure	Further information can be found in chapter “Stainless steel body, angle seat design” on page 6.
Opening pressure ¹⁾	0.5 bar
Environment and installation	
Installation	Horizontal or vertical

1.) Pressure data: overpressure to atmospheric pressure

2. Approvals and conformities

2.1. General notes

- The approvals and conformities listed below must be stated when making enquiries. This is the only way to ensure that the product complies with all required specifications.
- Not all available variants can be supplied with the below mentioned approvals or conformities.

2.2. Conformity

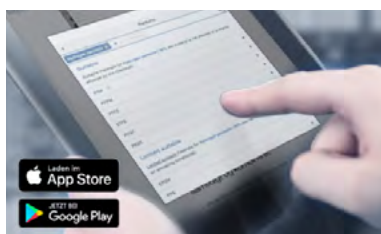
In accordance with the Declaration of Conformity, the product is compliant with the EU Directives.

2.3. Standards

The applied standards which are used to demonstrate compliance with the EU Directives are listed in the EU-Type Examination Certificate and/or the EU Declaration of Conformity.

3. Materials

3.1. Bürkert resistApp



Bürkert resistApp – Chemical resistance chart

You want to ensure the reliability and durability of the materials in your individual application case? Verify your combination of media and materials on our website or in our resistApp.

[Start chemical resistance check](#)

4. Dimensions

Note:

The dimensions are listed in the following chapters:

- [“Brass body, heavy design” on page 5](#)
- [“Brass body, light design” on page 6](#)
- [“Stainless steel body, angle seat design” on page 6](#)

[Visit product website](#) ►

5. Ordering information

5.1. Bürkert eShop



Bürkert eShop – Easy ordering and quick delivery

You want to find your desired Bürkert product or spare part quickly and order directly? Our online shop is available for you 24/7. Sign up and enjoy all the benefits.

[Order online now](#)

5.2. Bürkert product filter



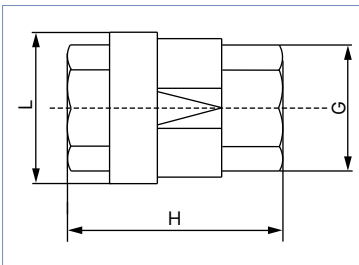
Bürkert product filter – Get quickly to the right product

You want to select products comfortably based on your technical requirements? Use the Bürkert product filter and find suitable articles for your application quickly and easily.

[Try out our product filter](#)

5.3. Ordering chart

Brass body, heavy design

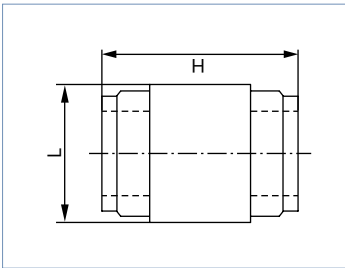


DN	Port connection according to ISO 228/1	G [mm]	H [mm]	L [mm]	Nominal pressure ¹⁾ [bar]	K _v value [m ³ /h]	Article no.
10	G 3/8	21	47	27	40	3.7	783275 𐀀
15	G 1/2	26	59	34.5	40	5.8	783276 𐀀
20	G 3/4	32	65	42	40	8.6	783277 𐀀
25	G 1	39	75	49	25	13.8	783278 𐀀
32	G 1 1/4	49	83	61	25	20.2	783279 𐀀
40	G 1 1/2	55	89	73	16	30.9	783280 𐀀
50	G 2	68	101.5	88.	16	48.8	783281 𐀀

1.) Pressure data: overpressure to atmospheric pressure

DTS 1000194806 EN Version: H Status: RL (released | freigegeben | valide) printed: 27.01.2026

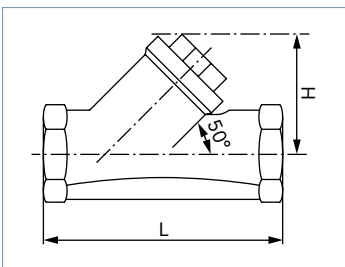
Brass body, light design



DN	Port connection according to ISO 228/1	H	L	Nominal pressure ^{1.)} [bar]	K _v value [m ³ /h]	Article no.
		[mm]	[mm]			
10	G 3/8	55	34	16	2.8	783285
15	G 1/2	45	28	40	3.7	783286
20	G 3/4	48	35	40	5.8	783287
25	G 1	56	42	25	8.6	783288
32	G 1 1/4	62	51	25	13.8	783289
40	G 1 1/2	69	61	16	20.2	783290
50	G 2	77	73	16	30.9	783291
65	G 2 1/2	93	90	12	48.8	783292
80	G 3	113	113	12	79.4	783293
100	G 4	135	140	10	124.9	783294

1.) Pressure data: overpressure to atmospheric pressure

Stainless steel body, angle seat design



DN	Port connection according to DIN 2999	H	L	Nominal pressure ^{1.)} [bar]	K _v value [m ³ /h]	Article no.
		[mm]	[mm]			
8	R 1/4	30	65	40	3.7	783305
10	R 3/8	30	65	40	3.7	783306
15	R 1/2	34	65	40	5.8	783307
20	R 3/4	39	75	40	8.6	783308
25	R 1	42	90	40	13.8	783309
32	R 1 1/4	50	110	40	20.2	783310
40	R 1 1/2	57	120	40	30.9	783311
50	R 2	70	150	40	48.8	783312

1.) Pressure data: overpressure to atmospheric pressure

DTS 1000194806 EN Version: H Status: RL (released | freigegeben | valide) printed: 27.01.2026