


- Compact design in 3 and 4-way versions
- Extendable valve block
- Reduced power consumption
- High cycle rocker pilot
- Different pneumatic connections available
- Approvals: 

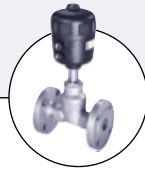
Type 5470 R can be combined with...



**Type 2506**  
Cable plug



**Type 2510/2511**  
ASI cable plug



**Type 2012**  
Single-seat globe valve

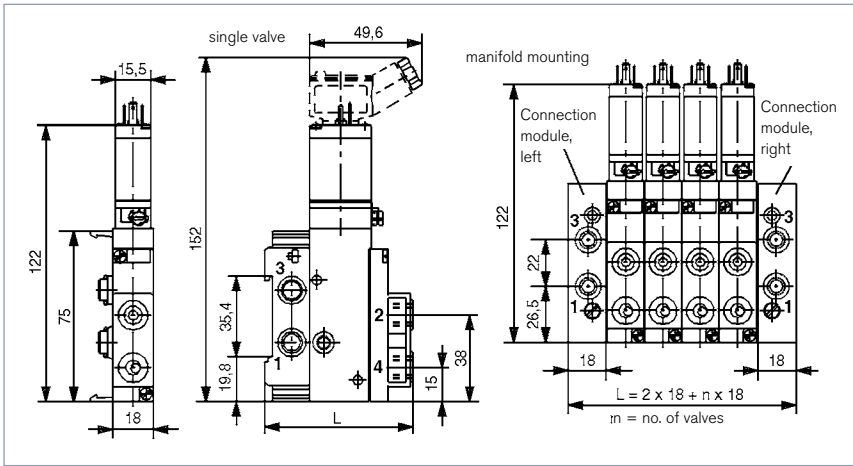
The Type 5470 R is available as a 3/2 and 4/2-way valve. Unique modular design allows valve banks to be easily assembled. Valves can be assembled, removed or replaced in a snap. Different variations are available for service ports 2 and 4.

Technical data	
<b>Orifice</b>	DN 4.0 mm
<b>Body material</b>	Polyamide (PA)
<b>Valve internal</b>	Ultramide
<b>Seal material</b>	NBR
<b>Media</b>	Compressed air, neutral gases (5 µm filtering)
<b>Media temperature</b>	+14 to 122 °F (-10 to +50 °C)
<b>Ambient temperature</b>	+14 to 131 °F (-10 to +55 °C)
<b>Supply connections 1, 3</b>	Module flange
<b>Service port 2 and 4</b>	Threaded port NPT 1/8
<b>Options</b>	Push-in connection Ø 1/4
<b>Voltage tolerance</b>	±10%
<b>Power consumption</b>	2W, 3W (Refer to the effective coil power in the ordering chart)
<b>Duty cycle</b>	100% continuous operation
<b>Electrical connection</b>	Tag connector above acc. to DIN 43650 Form C for cable plug type 2506 and Rectangular plug (5.08 mm) Type 2505
<b>Type of protection</b>	EEX ia IIC T6 on request, FM
<b>Protection class</b>	IP 65 with cable plug IP 20 at type 1057-SA and IP 40 at rectangular plug (5.08 mm)
<b>Installation</b>	As required, preferably with actuator upright
<b>Approvals</b>	UL recognized

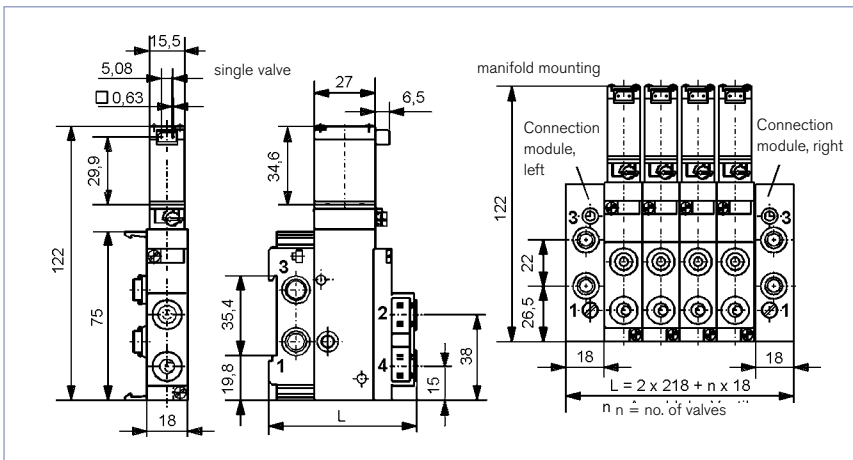
**Burkert Contromatic USA**  
2602 McGaw Avenue  
Irvine, CA 92614  
Tel. 949.223.3100  
Fax 949.223.3198  
www.burkert-usa.com

**Burkert Contromatic Inc.**  
760 Pacific Road, Unit 3  
Oakville, Ontario, Canada L6L 6M5  
Tel. 905.847.5566  
Fax 905.847.9006  
www.burkert.ca

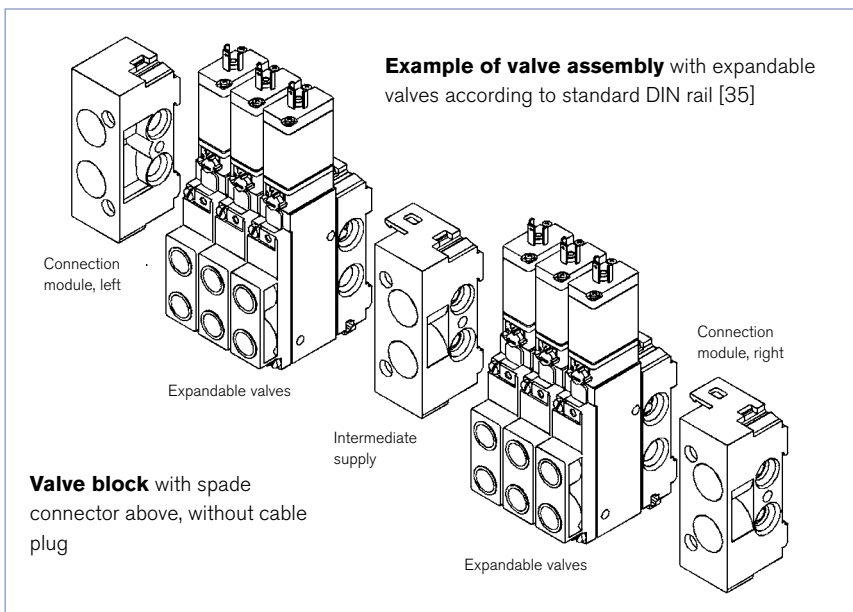
Valve with spade electrical connection on top dimensions [mm]



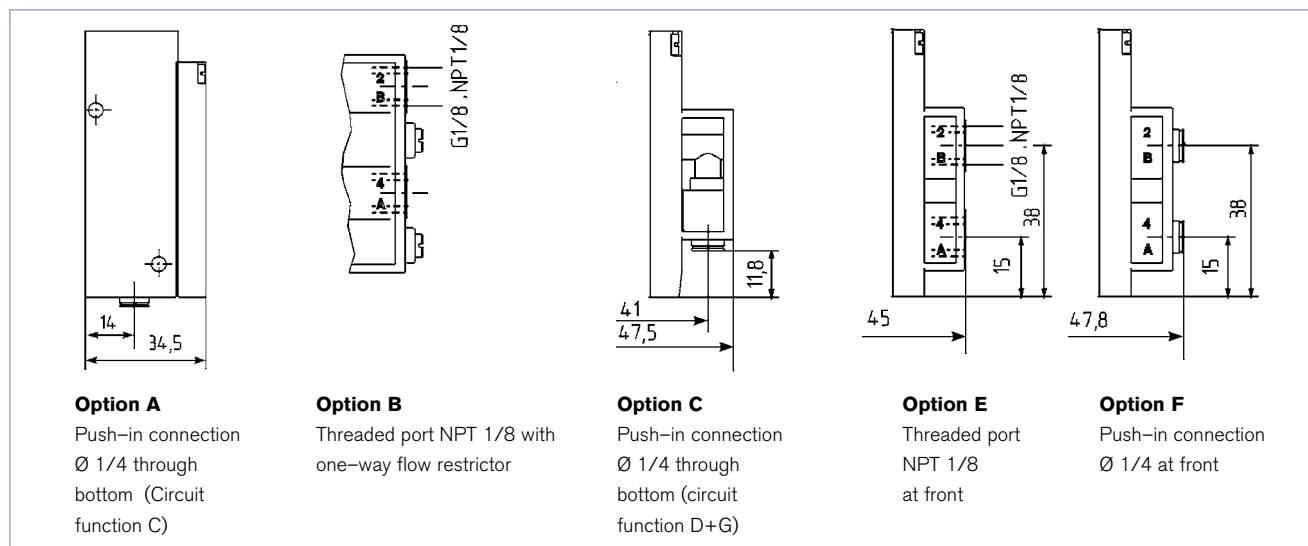
Valve with rectangular plug on the side dimensions [mm]



DTS 1000082439 EN Version: C Status: RL (released | freigegeben | validé) printed: 18.12.2024

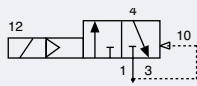
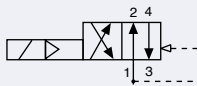


## Options for service port



## Ordering chart for valves (other versions on request)

Extendable single valve with module connection for supply ports 1 and 3, spade electrical connector on top, supplied without cable plug (see Accessories)

Circuit function	Orifice [mm]	Cv	Q <sub>N</sub> value air [l/min]	Pressure range [PSI]	Service port 2 and 4	Voltage/frequency [V/Hz]	Effective coil power [W]	Item no. ■ UC coil
<b>C</b> 3/2-way valve, NC ■ 	4.0	.32	300	29 - 145	Push-in connection Ø 1/4 in, below with check valve <b>(option A)</b>	024/DC/UC	2	458 398 L
						110-120/DC/UC	3	458 399 M
						220-240/DC/UC	3	458 400 K
<b>G</b> 4/2-way valve 	4.0	.32	300	29 - 145	NPT 1/8 in front <b>(option E)</b>	024/DC/UC	2	458 880 C
					NPT 1/8 in front with one-way flow restrictor <b>(option B)</b>	110-120/DC/UC	3	458 881 Z
						220-240/DC/UC	3	458 882 S
						024/DC/UC	2	458 884 U
					Push-in connection Ø 1/4 through bottom <b>(option C)</b>	110-120/DC/UC	3	458 885 V
						220-240/DC/UC	3	458 886 W
						024/DC/UC	2	458 825 Y
110-120/DC/UC	3	458 826 Z						
220-240/DC/UC	3	458 827 S						

3/2-way models, circuit function D (NO) on request

- 3/2-way models (circuit functions C and D) with non-return valve in the module flange
- ■ For universal current operation (UC = DC or AC); rectifier, varistor and LED integrated into the coil

**Ordering charts for accessories** (Connector modules and accessories for valve blocks, see drawing of block assembly)

Version	Port connection	Order no. DC coil
Connector module, left	NPT 1/4	132 513
Connector module, right	NPT 1/4	132 515

**Additional accessories**

Accessory part	Item no.
Rectangular connector, matrix 5.08 mm, with 3 m cable	133 486
Rectangular connector, matrix 5.08 mm, with 300 mm wires	644 068
Rectangular connector, matrix 5.08 mm, with 2 single contacts	644 067
Standard rail 12 in for 8 – 12 manifold station with intermediate supply or 8 – 14 manifold station without intermediate supply	640 789 W
Standard rail 18 in for 13 – 17 manifold station with intermediate supply or 15 – 19 manifold station without intermediate supply	640 788 V
Standard rail 19 in for 17 – 22 manifold station with 2 intermediate supplies or 18 – 23 manifold station with 1 intermediate supply	630 579 R

**Cable plug accessories**

Accessory part	Description	Item no.
Cable plug Type 2506 <sup>1)</sup>	without circuit, 0 – 250 V	008 353 P
Cable plug Type 2506 <sup>1)</sup>	with LED, 12 – 24 V	008 402 A
Cable plug Type 2506 <sup>1)</sup>	with LED and varistor, 12 – 24 V	008 408 Q
Cable plug Type 2506 <sup>1)</sup>	with LED, rectifier and varistor, 12 – 24 V	008 354 Q
Cable plug Type 2506 <sup>1)</sup>	with LED, rectifier and varistor, 120 – 120 V	008 355 R
Cable plug Type 2506 <sup>1)</sup>	with LED, rectifier and varistor, 200 – 240 V	008 356 J

1) With these accessories, only a partial list of possible cable plugs with built-in circuit functions are mentioned. For other versions see data sheet Type 2506.  
A flat seal and a mounting screw are standard with each cable plug.