



Plastic butterfly valve

- Manually operated, automatable
- For aggressive media
- Low torques
- Long service life
- Maintenance-friendly

Product variants described in the data sheet may differ from the product presentation and description.

Can be combined with

	Type 2052 Pneumatic rotary actuator	▶
	Type 2051 Pneumatic rotary actuator	▶
	Type 3003 Electrical Rotary Actuator - On/Off and control	▶
	Type 3004 Explosion-Proof Rotary Actuator - On/Off and control	▶
	Type 3005 Electric Rotary Actuator - On/Off and Control	▶
	Type 1061 Position feedback unit for pneumatic rotary actuators	▶
	Type 8792 Digital electropneumatic positioner SideControl	▶
	Type 2657 Ball valve, manually operated	▶

Type description

2/2 way plastic butterfly valves used for control and on/off operations. Type 2674 can be connected via the mechanical interface (according to ISO 5211) with pneumatic rotary actuators (for example, Type 2051 or 2052) and electric rotary actuators (for example, Type 3003, 3004 or 3005). Moreover, the valve is available with different kinds of liner (EPDM, FPM), housing (PVC-U, PP-GR) and disc (PVC-U, PP-H, PVDF, PVC-C) materials. Consequently, Type 2674 is suited for various aggressive media and meets the requirements of different applications and processes.

Table of contents

1. General technical data	3
<hr/>	
2. Approvals and conformities	3
2.1. General notes	3
2.2. Conformity	3
2.3. Standards	3
<hr/>	
3. Materials	3
3.1. Bürkert resistApp	3
3.2. Material specifications	3
FE butterfly valve DN 40...50	4
FE butterfly valve DN 65...200	4
FK butterfly valve DN 40...50	4
FK butterfly valve DN 65...200	6
FK butterfly valve DN 250...300	6
<hr/>	
4. Dimensions	7
4.1. FE butterfly valve	7
4.2. FK butterfly valve	8
<hr/>	
5. Performance specifications	9
5.1. Pressure temperature diagram	9
5.2. Torque	9
5.3. Flow characteristic	9
Flow diagram	9
5.4. K_{vs} value	10
<hr/>	
6. Ordering information	10
6.1. Bürkert eShop	10
6.2. Bürkert product filter	10
6.3. Ordering chart	10
Body: PVC-U, disc: PVC-U	10
Body: PP-GR, disc: PVC-U	11
Body: PP-GR, disc: PP-H	11
Body: PP-GR, disc: PVDF	12

1. General technical data

Product properties	
Dimensions	Further information can be found in chapter "4. Dimensions" on page 7.
Material	
Seal	EPDM, FPM
Body	PVC-U (FE variant), PP-GR (FK variant)
Disc	PVC-U, PP-H, PVDF, PVC-C (on request) Further information on materials can be found in chapter "3. Materials" on page 3.
Body design	Wafer, lug (on request)
Nominal diameter	DN 40...300
Medium data	
Medium temperature	PVC-U: 0...+ 60 °C PP: 0...+ 90 °C PVDF: 0...+ 100 °C PVC-C: 0...+ 100 °C
Medium pressure	Depending on the materials used, see "3.1. Bürkert resistApp" on page 3.
Process/Port connection & communication	
Port connection	DIN 2501, ISO DIS 9624, UNI 2223 BS 10 table D/E ASA B16.5 class 150 JIS 2212 (K10 except for DN 200/DN 300), JIS 2212 (K5 except for DN 50) Further information can be found in chapter "5.3. Flow characteristic" on page 9.
Armature-side interface	According to EN ISO 5211

2. Approvals and conformities

2.1. General notes

- The approvals and conformities listed below must be stated when making enquiries. This is the only way to ensure that the product complies with all required specifications.
- Not all available variants can be supplied with the below mentioned approvals or conformities.

2.2. Conformity

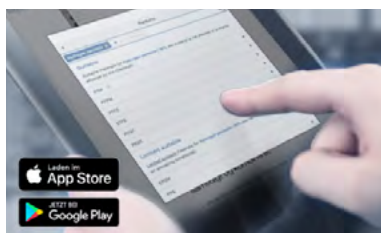
In accordance with the Declaration of Conformity, the product is compliant with the EU Directives.

2.3. Standards

The applied standards which are used to demonstrate compliance with the EU Directives are listed in the EU-Type Examination Certificate and/or the EU Declaration of Conformity.

3. Materials

3.1. Bürkert resistApp



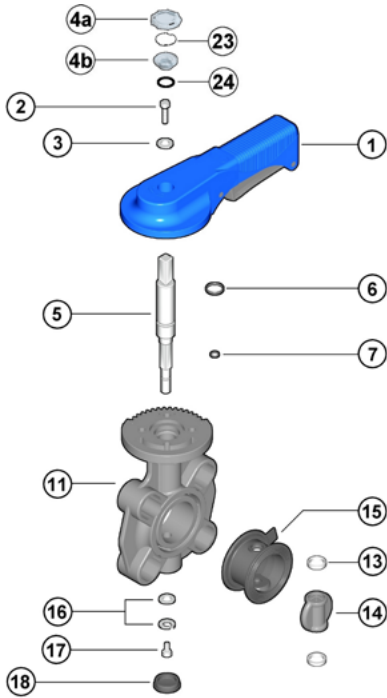
Bürkert resistApp – Chemical resistance chart

You want to ensure the reliability and durability of the materials in your individual application case? Verify your combination of media and materials on our website or in our resistApp.

[Start chemical resistance check](#)

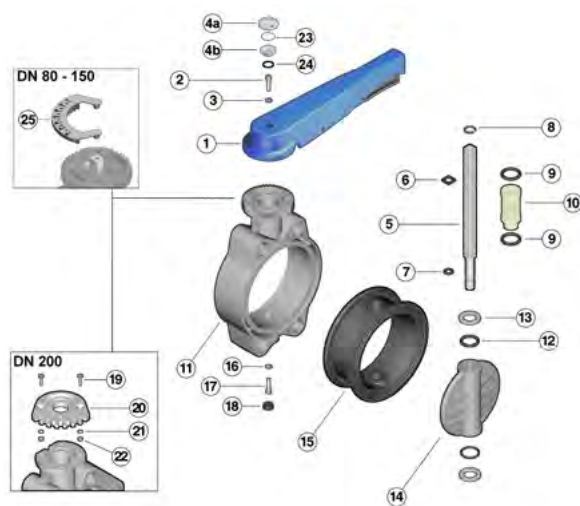
3.2. Material specifications

FE butterfly valve DN 40...50



No.	Element	Quantity	Material
1	Manual lever	1	HIPVC
2	Screw	1	Stainless steel
3	Washer	1	Stainless steel
4a/b	Transparent protective cap	1	PVC
5	Stem	1	Zinc-plated steel
6	O-ring for stem	1	EPDM or FPM
7	O-ring for stem	1	EPDM or FPM
11	Body	1	PVC-U
13	Antifriction ring	2	PTFE
14	Valve disc	1	PVC-U
15	Liner	1	EPDM or FPM
16	Washer	1	Steel
17	Screw	1	Stainless steel
18	Protective cap	1	PE
23	Tag holder	1	PVC-U
24	O-ring	2	NBR
25	Position indicator	1	PVC-U

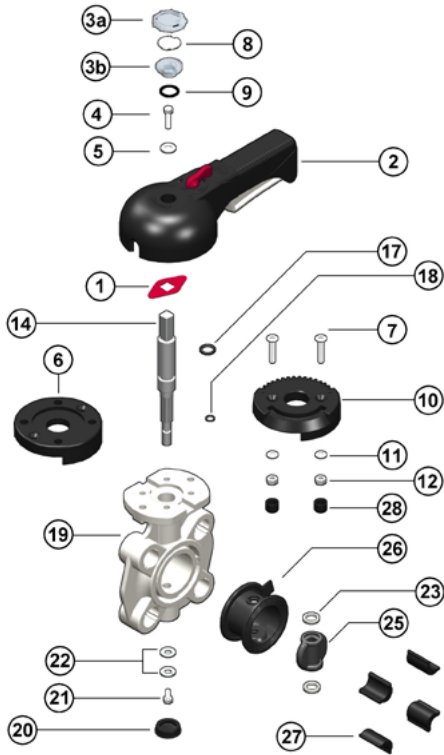
FE butterfly valve DN 65...200



No.	Element	Quantity	Material
1	Manual lever	1	HIPVC
2	Screw	1	Stainless steel
3	Washer	1	Stainless steel
4a/b	Transparent protective cap	1	PVC
5	Stem	1	Zinc-plated steel
6	O-ring for stem	1	EPDM or FPM
7	O-ring for stem	1	EPDM or FPM
8	Circlip	1	Stainless steel
9	O-ring for bush	2	EPDM or FPM
10	Bush	1	Nylon
11	Body	1	PVC-U
12	O-ring for disc	2	EPDM or FPM
13	Antifriction ring	2	PTFE
14	Valve disc	1	PVC-U
15	Liner	1	EPDM or FPM
16	Washer	1	Steel
17	Screw	1	Stainless steel
18	Protective cap	1	PE
19	Screw	2	Stainless steel
20	Plate	1	PVC-U
21	Washer	2	Stainless steel
22	Nut	2	Stainless steel
23	Tag holder	1	PVC-U
24	O-ring	2	NBR
25	Position indicator	1	PVC-U

DTS 1000302674 EN Version: F Status: RL (released | freigegeben | valide) printed: 18.12.2024

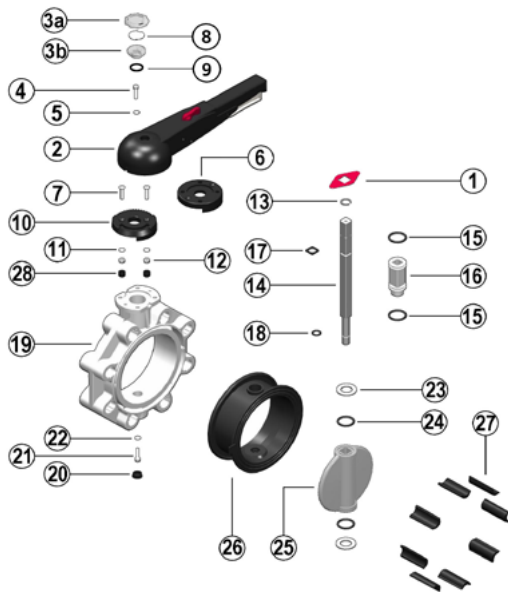
FK butterfly valve DN 40...50



No.	Element	Quantity	Material
1	Position indicator	1	PA
2	Manual lever	1	HIPVC
3a/b	Transparent protective cap	1	PVC
4	Fastening screw	1	Stainless steel
5	Washer	1	Stainless steel
6	Flange	1	PP-GR
7	Screw	2	Stainless steel
8	Tag holder	1	PVC-U
9	O-ring	1	NBR
10	Plate	1	PP-GR
11	Washer	2	Stainless steel
12	Nut	2	Stainless steel
14	Stem	1	Stainless steel 1.4401/316
17	O-ring for stem	1	EPDM or FPM
18	O-ring for stem	1	EPDM or FPM
19	Body	1	PP-GR
20	Protective cap	1	PE
21	Screw	1	Stainless steel
22	Washer	1	Stainless steel
23	Antifriction ring	2	PTFE
25	Valve disc	1	PVC-U or PP-H or PVDF
26	Liner	1	EPDM or FPM
27	Inserts	4...8	ABS
28	Protective plug	2	PE

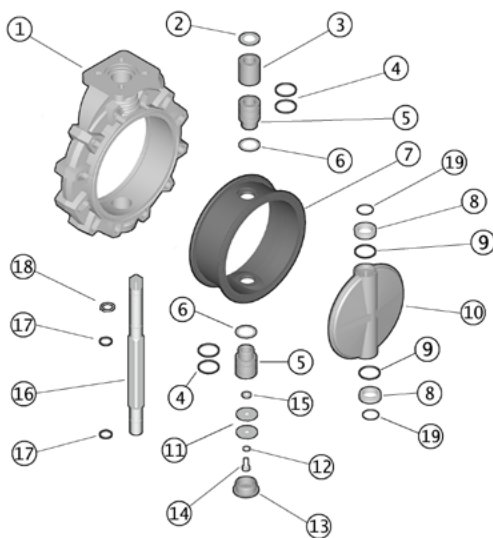
DTS 1000302674 EN Version: F Status: RL (released | freigegeben | validé) printed: 18.12.2024

FK butterfly valve DN 65...200



No.	Element	Quantity	Material
1	Position indicator	1	PA
2	Manual lever	1	HIPVC
3a/b	Transparent protective cap	1	PVC
4	Fastening screw	1	Stainless steel
5	Washer	1	Stainless steel
6	Flange	1	PP-GR
7	Screw	2	Stainless steel
8	Tag holder	1	PVC-U
9	O-ring	1	NBR
10	Plate	1	PP-GR
11	Washer	2	Stainless steel
12	Nut	2	Stainless steel
13	Circlip	1	Stainless steel
14	Stem	1	Stainless steel 1.4401/316
15	O-ring for bush	2	EPDM or FPM
16	Bush	1	Nylon
17	O-ring for stem	1	EPDM or FPM
18	O-ring for stem	1	EPDM or FPM
19	Body	1	PP-GR
20	Protective cap	1	PE
21	Screw	1	Stainless steel
22	Washer	1	Stainless steel
23	Antifriction ring	2	PTFE
24	O-ring for disc	2	EPDM or FPM
25	Valve disc	1	PVC-U or PP-H or PVDF
26	Liner	1	EPDM or FPM
27	Inserts	4...8	ABS
28	Protective plug	2	PE

FK butterfly valve DN 250...300

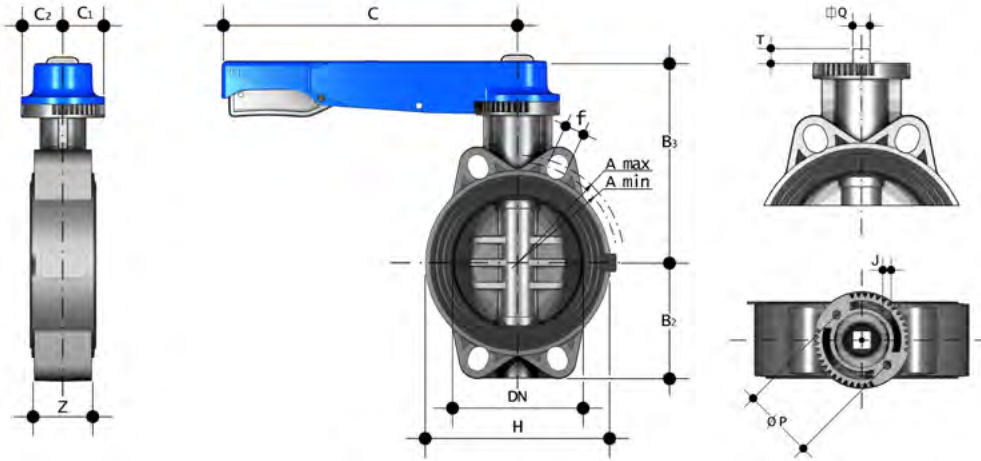


No.	Element	Quantity	Material
1	Body	1	PP-GR
2	Washer	1	Stainless steel
3	Bush	1	PP
4	O-ring for bush	4	EPDM or FPM
5	Bush	2	PP
6	Washer	2	PTFE
7	Liner	1	EPDM or FPM
8	Antifriction ring	2	PTFE
9	O-ring for disc	2	EPDM or FPM
10	Valve disc	1	PVC-U or PP-H or PVDF
11	Washer	2	Stainless steel
12	Washer	1	Stainless steel
13	Protective cap	1	PE
14	Screw	1	Stainless steel
15	Washer	1	Stainless steel
16	Stem	1	Stainless steel 1.4401/316
17	O-ring for stem	2	EPDM or FPM
18	Circlip	1	Stainless steel
19	O-ring	2	EPDM or FPM

DTS 1000302674 EN Version: F Status: RL (released | freigegeben | valide) printed: 18.12.2024

4. Dimensions

4.1. FE butterfly valve



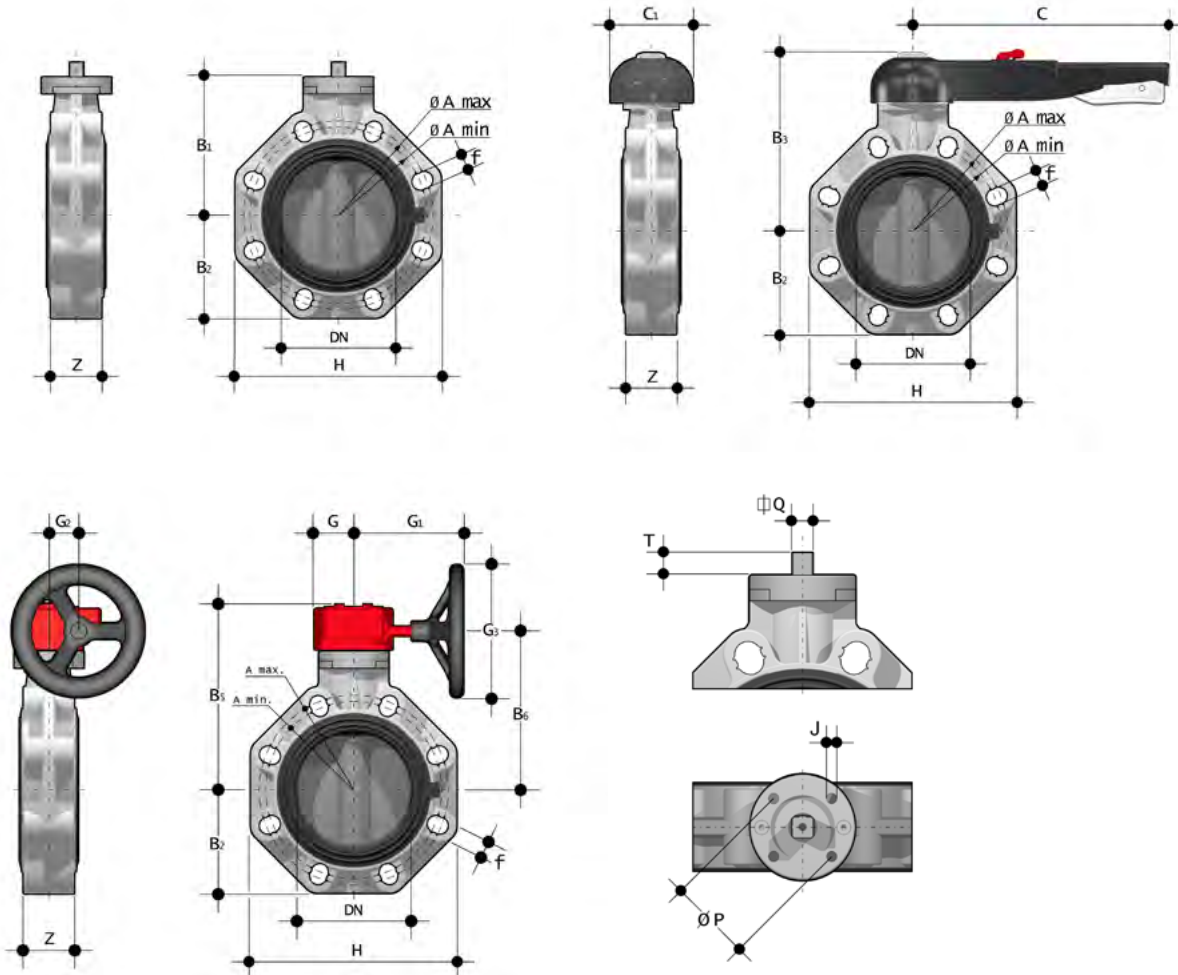
DN	d ¹⁾ [mm]	A _{min} [mm]	A _{max} [mm]	B2 [mm]	B3 [mm]	C [mm]	C1 [mm]	C2 [mm]	f [mm]	H [mm]	U [mm]	Z [mm]	J [mm]	T [mm]	Q [mm]	P [mm]	Interface acc. to ISO 5211
40	50	93.5	109	60	136	175	45	42	19	132	4	33	7	12	11	50	F05
50	63	108	124	70	143	175	45	42	19	147	4	43	7	12	11	50	F05
65	75	128	144	80	168	175	45	45	19	165	4	46	7	12	11	50	F05
80	90	145	159	90	182	250	45	45	19	130	4	49	9	16	14	70	F07
100	110	165	190	105	196	250	45	45	19	150	4	56	9	16	14	70	F07
125	140	204	215	121	215	335	45	45	23	185	4	64	9	19	17	70	F07
150	160	230	229	132	229	335	45	45	23	210	4	70	9	19	17	70	F07
200	225	280	309	161	309	425	65	82	23	325	8	71	11	24	22	102	F10

1.) Ø port connection [mm]

4.2. FK butterfly valve

Note:

Dimensions in mm



DN	d ¹⁾ [mm]	A _{min} [mm]	A _{max} [mm]	B1 [mm]	B2 [mm]	B3 [mm]	C [mm]	C1 [mm]	f [mm]	H [mm]	U [mm]	Z [mm]	J [mm]	T [mm]	Q [mm]	P [mm]	Interface acc. to ISO 5211
40	50	99	109	106	60	137	175	100	19	132	4	33	7	12	11	50	F05
50	63	115	125.5	112	70	143	175	100	19	147	4	43	7	12	11	50	F05
65	75	128	144	119	80	164	175	110	19	165	4	46	7/9	12	11	50/70	F05/07
80	90	145	160	133	93	178	175	100	19	185	8	49	9	16	14	70	F07
100	110	165	190	147	107	192	272	110	19	211	8	56	9	16	14	70	F07
125	140	204	215	167	120	212	330	110	23	240	8	64	9	19	17	70	F07
150	160	230	242	167	134	225	330	110	23	268	8	70	9	19	17	70	F07
200	225	280	298	180	161	272	420	122	23	323	8	71	11	24	22	10	F10

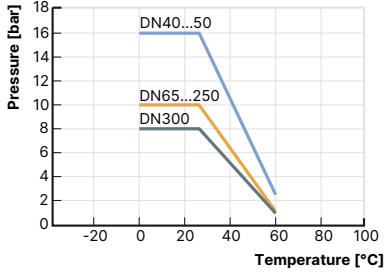
DN	d ¹⁾ [mm]	Ø A [mm]	B1 [mm]	B2 [mm]	B5 [mm]	B6 [mm]	G [mm]	G1 [mm]	G2 [mm]	G3 [mm]	f [mm]	H [mm]	U [mm]	Z [mm]	J [mm]	T [mm]	Q [mm]	P [mm]	Interface acc. to ISO 5211
250	280	350	248	210	317	281	88	236	76	250	22	405	12	114	11/13/17	29	27	102/125/140	F10/12/14
300	315	400	305	245	374	338	88	236	76	250	22	475	12	114	11/13/17	29	27	102/125/140	F10/12/14

1.) Ø port connection [mm]

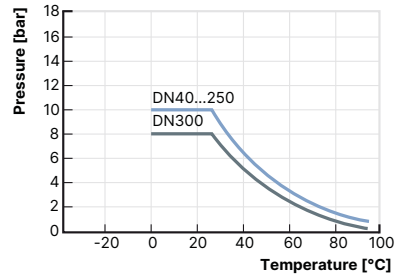
5. Performance specifications

5.1. Pressure temperature diagram

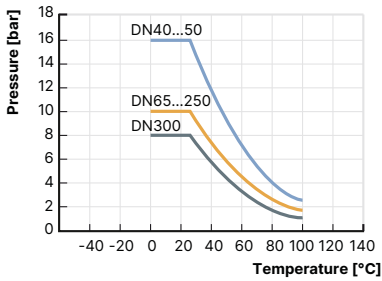
PVC-U



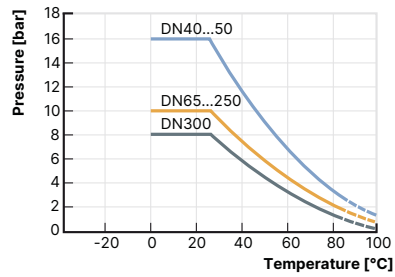
PP-H



PVDF



PVC-C

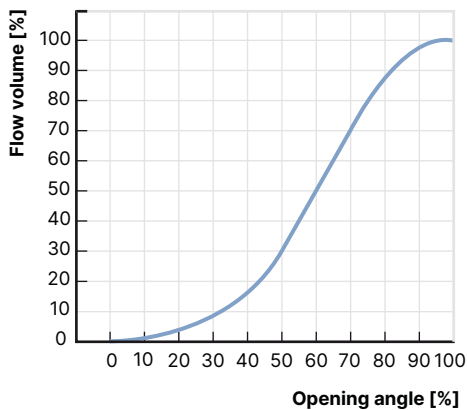


5.2. Torque

Torque											
Ø port connection [mm]	50	63	75	90	110	140	160	225	280	315	
DN [mm]	40	50	65	80	100	125	150	200	250	300	
Torque FE butterfly valve [Nm]	9	10	14	25	43	58	91	142	–	–	
Torque FK butterfly valve [Nm]	11	17	23	34	45	64	89	138	306	336	

5.3. Flow characteristic

Flow diagram




5.4. K_{vs} value

K_{vs} value										
Ø port connection [mm]	50	63	75	90	110	140	160	225	280	315
DN [mm]	40	50	65	80	100	125	150	200	250	300
K_{vs} [m ³ /h]	60	77.1	102	213	354	591	1122	1830	3192	4896

6. Ordering information

6.1. Bürkert eShop




Bürkert eShop – Easy ordering and quick delivery

You want to find your desired Bürkert product or spare part quickly and order directly? Our online shop is available for you 24/7. Sign up and enjoy all the benefits.

[Order online now](#)

6.2. Bürkert product filter



Bürkert product filter – Get quickly to the right product

You want to select products comfortably based on your technical requirements? Use the Bürkert product filter and find suitable articles for your application quickly and easily.

[Try out our product filter](#)

6.3. Ordering chart

Body: PVC-U, disc: PVC-U

DN	Port connection [mm]	Pressure range [bar]	Weight [kg]	Article no.	
				EPDM liner	FPM liner
40	50	16	0.83	254375	208205
50	63	16	1.01	254376	293948
65	75	10	1.42	254378	208207
80	90	10	1.64	254379	208208
100	110	10	1.99	212081	293949
125	140	10	3.03	254384	293950
150	160	10	3.73	254385	293951
200	225	10	8.24	254386	293952

Body: PP-GR, disc: PVC-U

Note:

ASA B.16.5 150 is available on request.

DN	Port connection	Pressure range	Weight bare shaft	Weight with lever	Article no. bare shaft		Article no. lever (DN 40...200), with manual gear box (DN 250...300)	
	[mm]				[bar]	[kg]	[kg]	EPDM liner
40	50	16	0.57	0.9	293953	293966	293957	293974
50	63	16	0.75	1.08	293954	208206	282059	293975
65	75	10	1	1.47	266067	293967	282061	293976
80	90	10	1.4	1.87	265713	277934	282062	277933
100	110	10	1.75	2.22	268247	293968	282063	293977
125	140	10	2.55	3.1	293955	293969	270796	293978
150	160	10	3.3	3.85	264866	293970	265983	293979
200	225	10	6	6.75	264864	293971	282064	293980
250 ¹⁾	280	10	12	18.6	293956	293972	293964	293987
300 ¹⁾	315	8	19	25.6	284675	293973	293965	293988

1.) According to ISO-DIN

Body: PP-GR, disc: PP-H

Note:

ASA B.16.5 150 is available on request.

DN	Port connection	Pressure range	Weight bare shaft	Weight with lever	Article no. bare shaft		Article no. lever (DN 40...200), with manual gear box (DN 250...300)	
	[mm]				[bar]	[kg]	[kg]	EPDM liner
40	50	10	0.47	0.8	293989	208209	293998	294020
50	63	10	0.65	0.98	293990	208210	293999	294021
65	75	10	0.9	1.37	273125	208211	294000	294022
80	90	10	1.3	1.77	293991	208212	294002	294023
100	110	10	1.65	2.12	293992	209928	294003	294024
125	140	10	2.45	3	293993	294015	294004	294025
150	160	10	3.2	3.75	293994	294016	294005	294026
200	225	10	5.9	6.65	293995	294017	294006	294027
250 ¹⁾	280	10	11.8	18.4	293996	294018	294013	294034
300 ¹⁾	315	8	18.7	25.45	293997	294019	294014	294035

1.) According to ISO-DIN

DTS 1000302674 EN Version: F Status: RL (released | freigegeben | valide) printed: 18.12.2024

Body: PP-GR, disc: PVDF

Note:

ASA B.16.5 150 is available on request.

DN	Port connection	Pressure range	Weight bare shaft	Weight with lever	Article no. bare shaft		Article no. lever (DN 40...200), with manual gear box (DN 250...300)	
	[mm]	[bar]	[kg]	[kg]	EPDM liner	FPM liner	EPDM liner	FPM liner
40	50	16	0.67	1	294216	294036	294229	294044
50	63	16	0.85	1.18	294218	294037	294230	294045
65	75	10	1.1	1.57	294219	294038	294232	277324
80	90	10	1.55	2.02	294220	294039	294233	277325
100	110	10	1.9	2.37	294221	267777	294234	277326
125	140	10	2.75	3.3	294222	294040	294236	294046
150	160	10	3.55	4.1	294224	289253	294237	294047
200	225	10	6.3	7.05	294225	294041	294238	294048
250 ¹⁾	280	10	13	19.6	294227	294042	294249	294055
300 ¹⁾	315	8	21	27.6	294228	294043	294250	294056

1.) According to ISO-DIN