



2/2-way stainless steel ball valve three pieces for hygienic applications

- Investment cast stainless steel
- Blow-out proof stem with adjustable packing
- Long service life
- Manual and ISO 5211 mounting flange versions
- Suitable for CIP and SIP (cleaning in process)

Product variants described in the data sheet may differ from the product presentation and description.

Can be combined with

| | | |
|--|--|---|
| | Type 2051 Pneumatic rotary actuator | ▶ |
| | Type 2053 Pneumatic rotary actuator for the automation of ball and butterfly valves | ▶ |
| | Type 3003 Electrical Rotary Actuator – On/Off and control | ▶ |
| | Type 3005 Electric Rotary Actuator – On/Off and Control | ▶ |
| | Type 3004 Explosion-Proof Rotary Actuator – On/Off or Control | ▶ |
| | Type 1061 Position feedback unit for pneumatic rotary actuators | ▶ |
| | Type 8692 Digital electro-pneumatic positioner for integrated mounting on process control valves | ▶ |

Type description

The ball valves are manufactured using high quality materials and fulfil the requirements of many international standards. They offer maximum flow performance for hygienic duties and are available in different variations.

Thanks to their simple construction, the ball valves are very low-maintenance.

Furthermore, they can be connected via the mechanical interface (according to ISO 5211) with pneumatic (e.g. Type 2051, Type 2052, Type 2053) and electrical rotary actuators (e.g. Type 3003, Type 3004, Type 3005).

Applications

- Biotechnology
- Pharmaceutical industry
- Chemical industry
- Dairy plants
- Food industry
- Cosmetics industry

Table of contents

| | |
|--|-----------|
| 1. General technical data | 4 |
| <hr/> | |
| 2. Approvals and conformities | 5 |
| 2.1. General notes | 5 |
| 2.2. Conformity | 5 |
| 2.3. Standards | 5 |
| 2.4. Foods and beverages/Hygiene | 5 |
| <hr/> | |
| 3. Materials | 5 |
| 3.1. Bürkert resistApp | 5 |
| 3.2. Material specifications | 6 |
| <hr/> | |
| 4. Dimensions | 7 |
| 4.1. Dimensions ASME BPE | 7 |
| 4.2. Dimensions DIN 32676 series A clamp ferrule | 8 |
| 4.3. Dimensions SMS 3008 | 9 |
| 4.4. Dimensions ISO 1127 / 4200 | 10 |
| 4.5. Dimensions DIN 11850 series 2 | 11 |
| <hr/> | |
| 5. Performance specifications | 12 |
| 5.1. Pressure temperature diagram ASME BPE and DIN 32676 series A | 12 |
| DN 15...DN 25 | 12 |
| DN 40...DN 50 | 12 |
| DN 65...DN 100 | 12 |
| 5.2. Pressure temperature diagram ISO 1127 / 4200 and DIN 11850 series 2 | 13 |
| DN 6...DN 50 | 13 |
| DN 65...DN 100 | 13 |
| 5.3. Torques | 13 |
| <hr/> | |
| 6. Product accessories | 14 |
| 6.1. Soft parts sets | 14 |
| 6.2. Handle sets | 14 |
| 6.3. Spring return handle for direct mounting ball valve | 15 |
| 6.4. V-ball for modulation control | 15 |
| 6.5. Mounting bracket for limit switch box | 15 |
| 6.6. Extended bonnet 75 mm | 16 |
| 6.7. Fugitive emission bonnet | 16 |
| 6.8. Mounting bracket for actuation | 16 |
| 6.9. Stem coupler for mounting bracket | 17 |
| 6.10. Stem sleeve | 17 |
| <hr/> | |
| 7. Networking and combination with other Bürkert products | 18 |

| | |
|--|-----------|
| 8. Ordering information | 19 |
| 8.1. Bürkert eShop | 19 |
| 8.2. Bürkert product filter | 19 |
| 8.3. Ordering chart ASME BPE tube weld | 19 |
| 8.4. Ordering chart ASME BPE extended tube weld..... | 20 |
| 8.5. Ordering chart ASME BPE clamp ferrule | 20 |
| 8.6. Ordering chart DIN 32676 series A clamp ferrule..... | 20 |
| 8.7. Ordering chart SMS 3008 tube weld | 21 |
| 8.8. Ordering chart ISO 1127 / 4200 tube weld..... | 21 |
| 8.9. Ordering chart DIN 11850 series 2 tube weld..... | 22 |
| 8.10. Ordering chart soft parts set ASME BPE and SMS 3008..... | 23 |
| 8.11. Ordering chart soft parts set DIN 32676 series A | 23 |
| 8.12. Ordering chart soft parts set ISO 1127 / 4200 and DIN 11850 series 2 | 23 |
| 8.13. Ordering chart handle sets | 24 |
| 8.14. Ordering chart spring return handle..... | 24 |
| 8.15. Ordering chart V-balls for modulation control ASME BPE, DIN 32676 series A and SMS 3008..... | 24 |
| 8.16. Ordering chart V-balls for modulation control ISO 1127 / 4200 and DIN 11850 | 25 |
| 8.17. Ordering chart mounting bracket for limit switch box | 25 |
| 8.18. Ordering chart extended bonnet 75 mm..... | 25 |
| 8.19. Ordering chart fugitive emission bonnet..... | 26 |
| 8.20. Ordering chart mounting bracket for actuation | 26 |
| 8.21. Ordering chart stem coupler for mounting bracket..... | 26 |
| 8.22. Ordering chart stem sleeves | 27 |

1. General technical data

| Product properties | |
|----------------------------|--|
| Dimensions | Further information can be found in chapter “4. Dimensions” on page 7. |
| Material | Further information can be found in chapter “3. Materials” on page 5. |
| Body | Body versions according to: <ul style="list-style-type: none"> Stainless steel ASTM A351 Gr.CF8M Stainless steel ASTM A351 Gr.CF3M |
| Ball | Ball versions according to: <ul style="list-style-type: none"> Stainless steel 316 Stainless steel 316L |
| Stem | Stem versions according to: <ul style="list-style-type: none"> Stainless steel 316 Stainless steel 316L |
| Seal | Seat versions: <ul style="list-style-type: none"> PTFE, cavity-filled and non-filled (FDA-conforming) TFM, cavity-filled and non-filled (FDA-conforming) <p>Body gasket, thrust washer and stem packing:</p> <ul style="list-style-type: none"> TFM (FDA-conforming) |
| Medium data | |
| Medium | Stainless steel body: aggressive media which do not attack the body and seal material |
| Medium temperature | - 20 °C...220 °C (see “5.1. Pressure temperature diagram ASME BPE and DIN 32676 series A” on page 12.) |
| Medium pressure | See “5.1. Pressure temperature diagram ASME BPE and DIN 32676 series A” on page 12. |
| Process/Port connections | |
| Port connection | Tube weld end versions according to: <ul style="list-style-type: none"> ASME BPE ASME BPE extended SMS 3008 DIN 11850 series 2 ISO 1127 / ISO 4200 <p>Clamp ferrule versions according to:</p> <ul style="list-style-type: none"> ASME BPE DIN 32676 series A |
| Approvals and conformities | |
| ISO head flange | EN ISO 5211 |
| Anti-static | Spring loaded ball in stem and conductive spring |
| Certificates | |
| Safety instrument systems | SIL 2 |
| Food and beverages/Hygiene | |
| FDA | Further information can be found “2.4. Foods and beverages/Hygiene” on page 5. |
| USP | Further information can be found “2.4. Foods and beverages/Hygiene” on page 5. |
| EC Regulation 1935/2004 | Further information can be found “2.4. Foods and beverages/Hygiene” on page 5. |
| ADI | Further information can be found “2.4. Foods and beverages/Hygiene” on page 5. |

2. Approvals and conformities

2.1. General notes

- The approvals and conformities listed below must be stated when making enquiries. This is the only way to ensure that the product complies with all required specifications.
- Not all available verions can be supplied with the below mentioned approvals or conformities.

2.2. Conformity


In accordance with the Declaration of Conformity, the product is compliant with the EU Directives.

- Pressure Equipment Directive 2014/68/EU

2.3. Standards

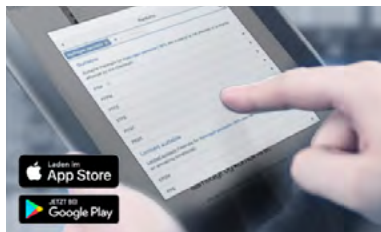
The applied standards which are used to demonstrate compliance with the EU Directives are listed in the EU-Type Examination Certificate and/or the EU Declaration of Conformity.

2.4. Foods and beverages/Hygiene

| Conformity | Description |
|---|---|
| FDA | FDA – Code of Federal Regulations The seals made of PTFE and TFM1600 comply with the Code of Federal Regulations published by the FDA (Food and Drug Administration, USA). The O-rings made of FKM comply with the Code of Federal Regulations published by the FDA (Food and Drug Administration, USA). |
| USP | United States Pharmacopeial Convention (USP) The seals made of PTFE and TFM1600 are tested according to USP Class VI. |
|  | EC Regulation 1935/2004 of the European Parliament and of the Council The seals made of PTFE and TFM1600 are suitable for use with food and beverages (according to EC Regulation 1935/2004/EC). |
| ADI | Animal Derived Ingredients The seals made of PTFE and TFM1600 do not contain any raw material of animal or human origin. |

3. Materials

3.1. Bürkert resistApp

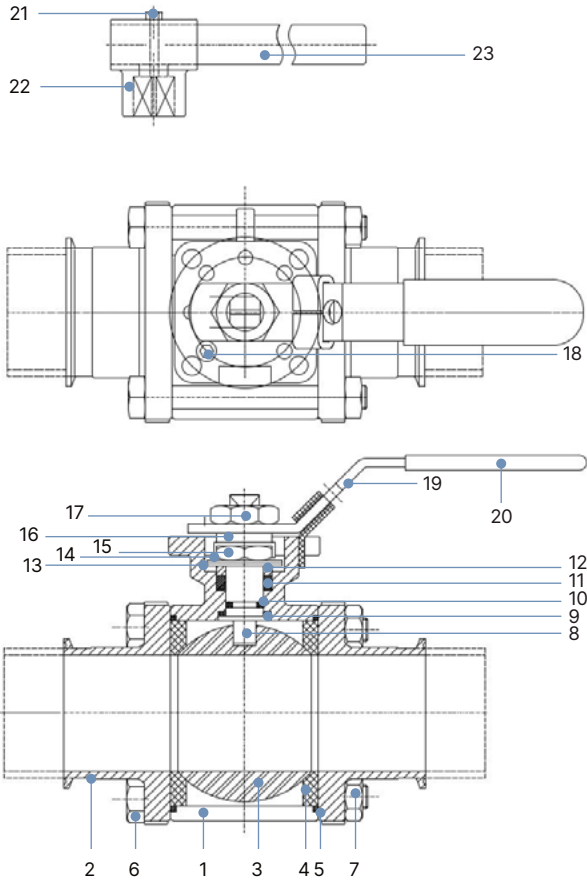


Bürkert resistApp – Chemical resistance chart

You want to ensure the reliability and durability of the materials in your individual application case? Verify your combination of media and materials on our website or in our resistApp.

3.2. Material specifications

DN 65...DN 150



| No. | Element | Material | Option | Quantity |
|-----|----------------|-----------|-----------|------------------|
| 1 | End cap | CF8M | CF3M | 2 |
| 2 | Body | CF8M | CF3M | 1 |
| 3 | Ball | SS 316 | SS 316L | 1 |
| 4 | Seat | PTFE | TFM1600 | 2 |
| 5 | Gasket | TFM | TFM1600 | 2 |
| 6 | Body bolts | SS 304 | SS 304 | 4 ^{1.)} |
| 7 | Body nut | SS 304 | SS 304 | 4 ^{1.)} |
| 8 | Stem | SS 316 | SS 316L | 1 |
| 9 | Thrust washer | TFM | TFM | 1 |
| 10 | O-ring | FKM (FDA) | FKM (FDA) | 1 |
| 11 | Stem packing | TFM1600 | TFM1600 | 1 (set) |
| 12 | Gland washer | SS 304 | SS 304 | 1 |
| 13 | Disc washer | SS 301 | SS 301 | 2 |
| 14 | Nut stop | SS 304 | SS 304 | 1 |
| 15 | Stem nut | SS 304 | SS 304 | 1 |
| 16 | Space washer | SS 304 | SS 304 | 1 |
| 17 | Handle nut | SS 304 | SS 304 | 1 |
| 18 | Stop pin | SS 304 | SS 304 | 1 |
| 19 | Handle | SS 304 | SS 304 | 1 |
| 20 | Sleeve | Plastic | Plastic | 1 |
| 21 | Set bolt | SS 304 | SS 304 | 1 |
| 22 | Lever head cap | CF8 | CF8 | 1 |
| 23 | Lever | SS 304 | SS 304 | 1 |

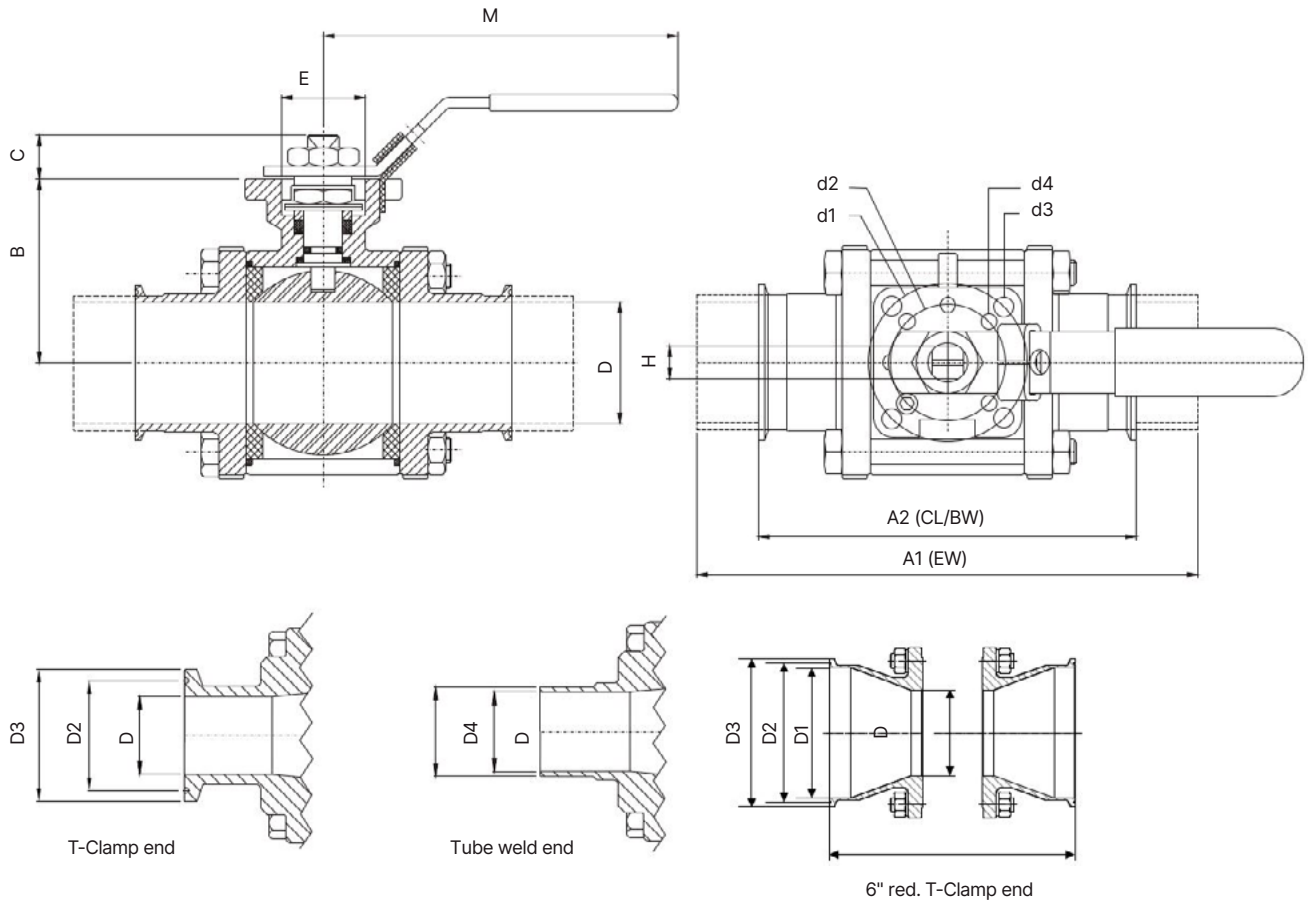
1.) 6 bolts and nuts on 4" valve

4. Dimensions

4.1. Dimensions ASME BPE

Note:

Dimensions in mm



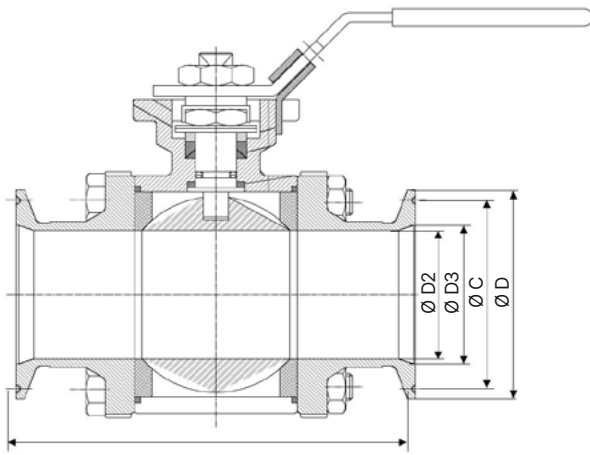
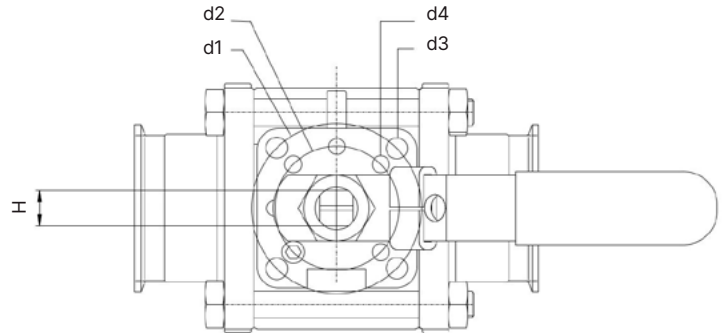
| Nominal diameter | A1 | A2 | B | C | d1 | d2 | d3 | d4 | E | H | M | D | D1 | D2 | D3 | D4 |
|------------------|-------|-------|-----|-----|-----|-----|------|------|----|----|-----|------|--------|-------|-------|-------|
| [inch] | | | | | | | | | | | | | | | | |
| 1/4" | - | 88.9 | 38 | 9.5 | 42 | 36 | 6.0 | 6.0 | 25 | 9 | 135 | 4.57 | - | - | - | 6.35 |
| 3/8" | - | 88.9 | 38 | 9.5 | 42 | 36 | 6.0 | 6.0 | 25 | 9 | 135 | 7.75 | - | - | - | 9.53 |
| 1/2" | 124.4 | 88.9 | 38 | 9.5 | 42 | 36 | 6.0 | 6.0 | 25 | 9 | 135 | 9.6 | - | 21.7 | 25 | 12.7 |
| 3/4" | 142.2 | 101.6 | 38 | 9.5 | 42 | 36 | 6.0 | 6.0 | 25 | 9 | 135 | 15.8 | - | 21.7 | 25 | 19.05 |
| 1" | 162.3 | 114.3 | 48 | 14 | 50 | 42 | 7.0 | 6.0 | 30 | 11 | 155 | 22.1 | - | 43.5 | 50.4 | 25.4 |
| 1 1/2" | 182.8 | 139.7 | 60 | 18 | 70 | 50 | 9.2 | 7.0 | 35 | 14 | 205 | 34.8 | - | 43.5 | 50.4 | 38.1 |
| 2" | 193.0 | 158.8 | 69 | 18 | 70 | 50 | 9.2 | 7.0 | 35 | 14 | 205 | 47.5 | - | 56.5 | 63.9 | 50.8 |
| 2 1/2" | 254.1 | 171.5 | 89 | 20 | 102 | 70 | 11.3 | 9.0 | 55 | 17 | 300 | 60.2 | - | 70.5 | 77.4 | 63.5 |
| 3" | 276.9 | 196.8 | 98 | 20 | 102 | 70 | 11.3 | 9.0 | 55 | 17 | 300 | 72.9 | - | 83.3 | 90.9 | 76.2 |
| 4" | 304.9 | 241.3 | 130 | 26 | 125 | 102 | 13.5 | 11.3 | 70 | 22 | 350 | 97.4 | - | 110.3 | 118.9 | 101.6 |
| 6" (red.) | - | 328.3 | 130 | 26 | 125 | 102 | 13.5 | 11.3 | 70 | 22 | 350 | 97.4 | 146.85 | 156.9 | 166.9 | - |

DTS 1000656928 EN Version: A Status: RL (released | freigegeben | valide) printed: 13.05.2026

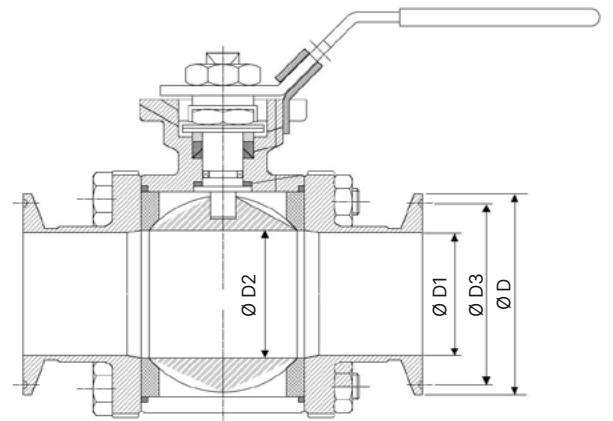
4.2. Dimensions DIN 32676 series A clamp ferrule

Note:

Dimensions in mm



DN 15, 25, 40, 50, 65, 80, 100



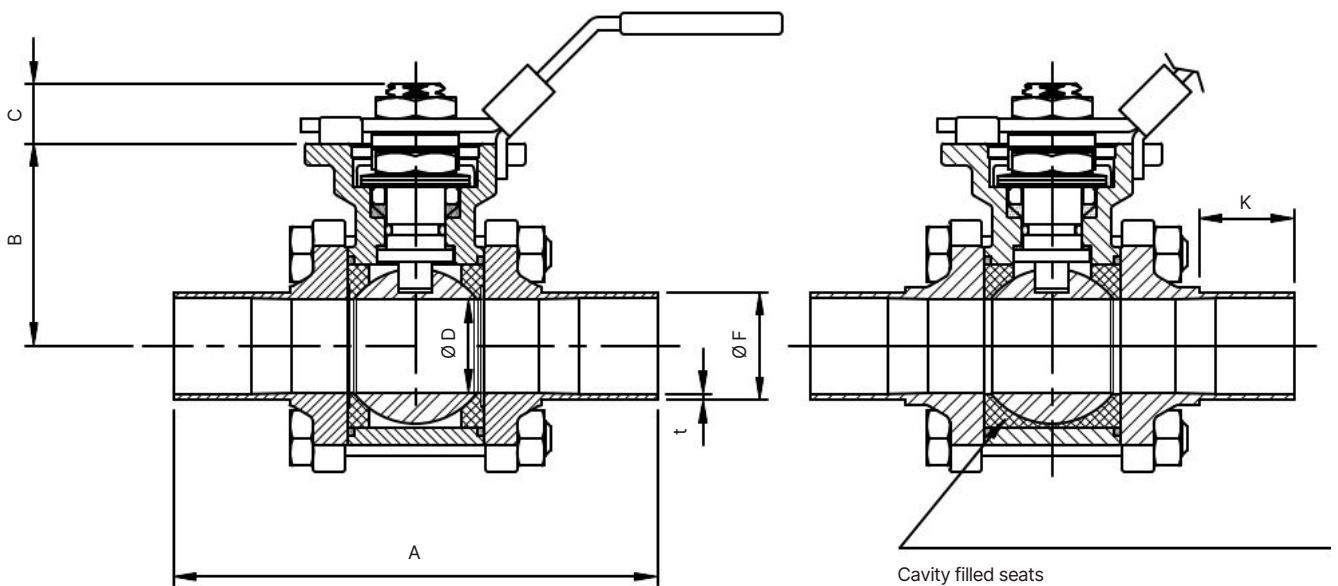
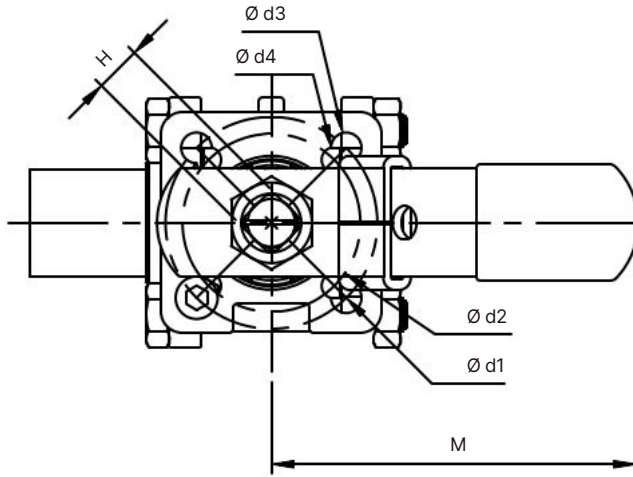
DN 20

| Nominal diameter [mm] | L | B | C | d1 | d2 | d3 | d4 | E | H | M | D | D1 | D2 | D3 | Original body size [inch] |
|-----------------------|-------|-----|-----|-----|-----|------|------|----|----|-----|------|-----|------|------|---------------------------|
| 15 | 101.6 | 38 | 9.5 | 42 | 36 | 6.0 | 6.0 | 25 | 9 | 135 | 34 | 16 | 9.6 | 27.5 | ¾ |
| 20 | 101.6 | 38 | 9.5 | 42 | 36 | 6.0 | 6.0 | 25 | 9 | 135 | 34 | 20 | 15.8 | 27.5 | 1 |
| 25 | 114.3 | 48 | 14 | 50 | 42 | 7.0 | 6.0 | 30 | 11 | 155 | 50.5 | 26 | 22.1 | 43.5 | 1 |
| 40 | 139.8 | 60 | 18 | 70 | 50 | 9.2 | 7.0 | 35 | 14 | 205 | 50.5 | 38 | 34.8 | 43.5 | 1½ |
| 50 | 158.8 | 69 | 18 | 70 | 50 | 9.2 | 7.0 | 35 | 14 | 205 | 64 | 50 | 47.5 | 56.5 | 2 |
| 65 | 171.5 | 89 | 20 | 102 | 70 | 11.3 | 9.0 | 55 | 17 | 300 | 91 | 66 | 60.2 | 83.5 | 2½ |
| 80 | 196.3 | 98 | 20 | 102 | 70 | 11.3 | 9.0 | 55 | 17 | 300 | 106 | 81 | 72.9 | 91.0 | 3 |
| 100 | 241.3 | 130 | 26 | 125 | 102 | 13.5 | 11.3 | 70 | 22 | 350 | 119 | 100 | 97.4 | 110 | 4 |

4.3. Dimensions SMS 3008

Note:

Dimensions in mm



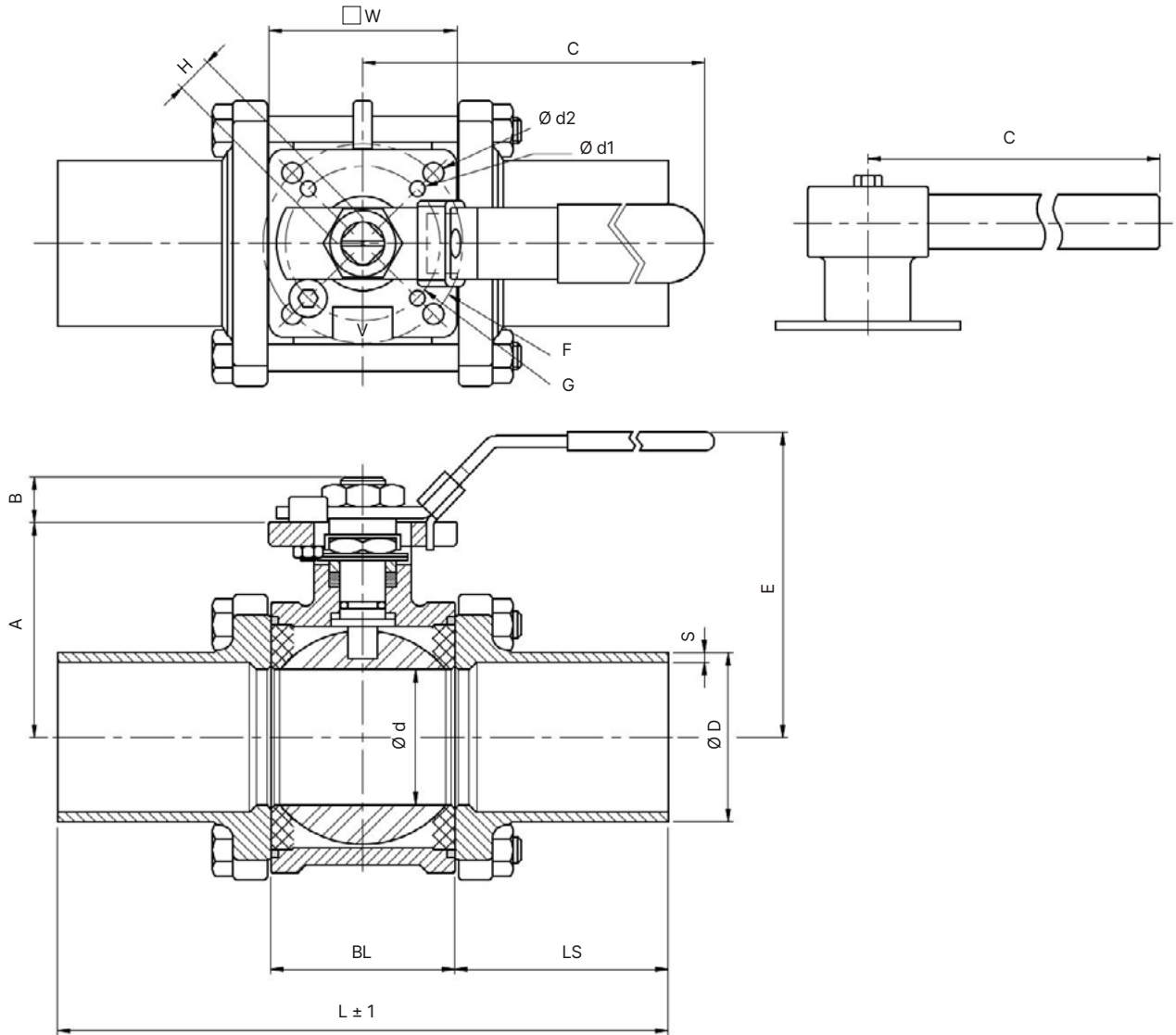
| Nominal diameter [mm] | A | K | B | C | D | F | t | d1 | d2 | d3 | d4 | H | M |
|--------------------------|-------|------|-----|-----|------|-------|------|-----|-----|------|------|----|-----|
| 15 | 88.9 | 19 | 38 | 9.5 | 9.6 | 13 | 1.5 | 42 | 36 | 6.0 | 6.0 | 9 | 135 |
| 20 | 101.6 | 28 | 38 | 9.5 | 15.8 | 18 | 1.0 | 42 | 36 | 6.0 | 6.0 | 9 | 135 |
| 25 | 114.3 | 27.5 | 48 | 14 | 22.1 | 25 | 1.2 | 50 | 42 | 7.0 | 6.0 | 11 | 155 |
| 40 | 139.8 | 31 | 60 | 18 | 34.8 | 38 | 1.2 | 70 | 50 | 9.2 | 7.0 | 14 | 205 |
| 50 | 158.9 | 31 | 69 | 18 | 47.5 | 51 | 1.2 | 70 | 50 | 9.2 | 7.0 | 14 | 205 |
| 65 | 171.5 | 30 | 89 | 20 | 60.2 | 63.5 | 1.65 | 102 | 70 | 11.3 | 9.0 | 17 | 300 |
| 80 | 196.3 | 30 | 98 | 20 | 72.9 | 76.2 | 1.65 | 102 | 70 | 11.3 | 9.0 | 17 | 300 |
| 100 | 241.3 | 32 | 130 | 26 | 97.3 | 101.6 | 2.1 | 125 | 102 | 13.5 | 11.3 | 22 | 350 |

DTS 1000656928 EN Version: A Status: RL (released | freigegeben | valide) printed: 13.05.2026

4.4. Dimensions ISO 1127 / 4200

Note:

Dimensions in mm



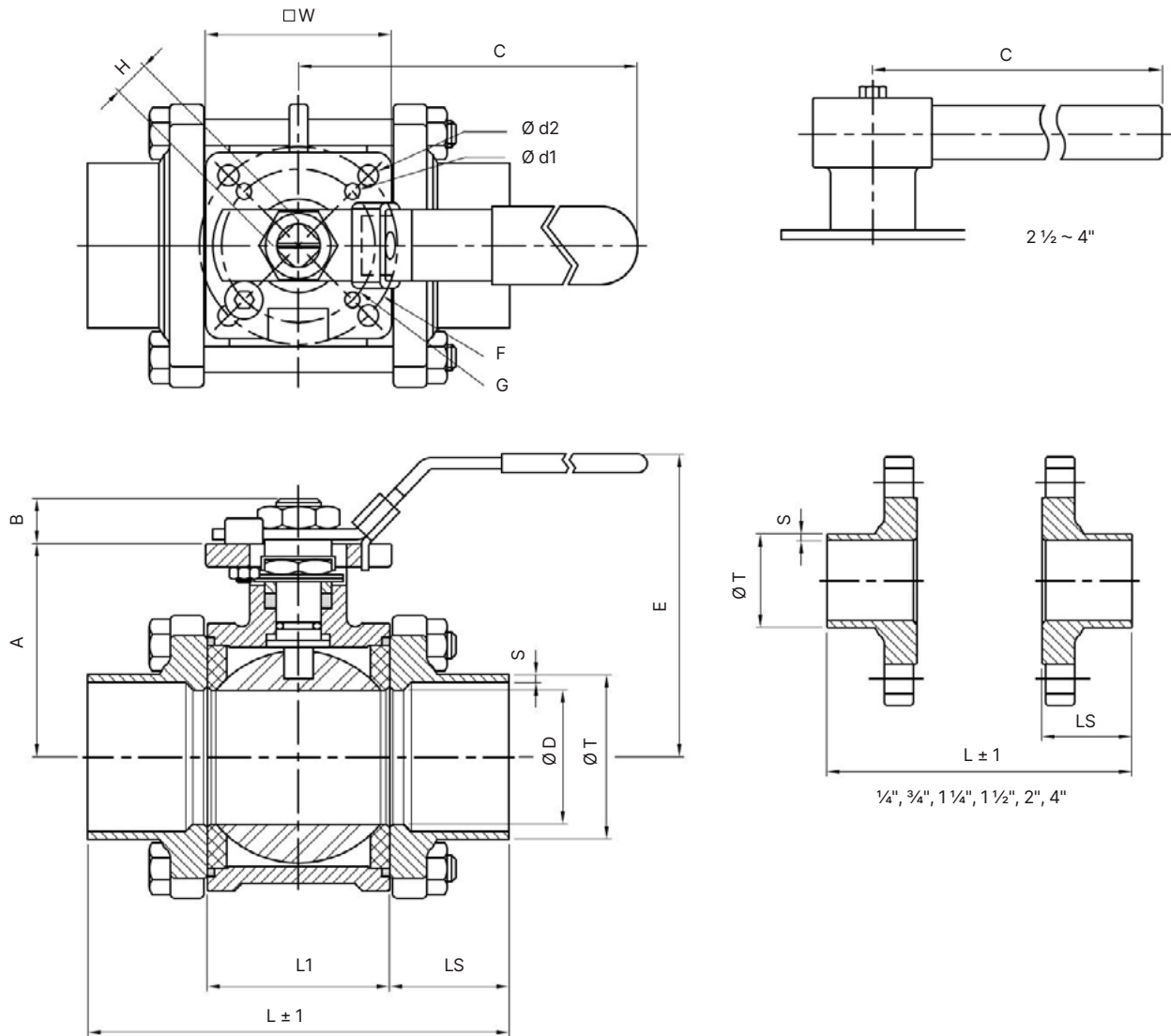
| Nominal diameter [mm] | A | B | C | d | d1 | d2 | E | F | G | H | BL | LS | L | V | W | S | D |
|-----------------------|-----|----|-----|------|------|------|-----|-----|-----|----|------|------|-------|----|-----|-----|-------|
| 6 | 37 | 9 | 130 | 6.9 | 6.0 | 6.0 | 58 | 36 | 42 | 9 | 24.3 | 47.9 | 120.1 | 19 | 44 | 1.6 | 13.5 |
| 8 | 37 | 9 | 130 | 11 | 6.0 | 6.0 | 58 | 36 | 42 | 9 | 24.3 | 47.9 | 120.1 | 19 | 44 | 1.6 | 13.5 |
| 10 | 37 | 9 | 130 | 12.5 | 6.0 | 6.0 | 58 | 36 | 42 | 9 | 24.3 | 47.9 | 120.1 | 19 | 44 | 1.6 | 17.2 |
| 15 | 37 | 9 | 130 | 15 | 6.0 | 6.0 | 58 | 36 | 42 | 9 | 24.3 | 57.9 | 140.1 | 19 | 44 | 1.6 | 21.3 |
| 20 | 40 | 10 | 130 | 20 | 6.0 | 6.0 | 64 | 36 | 42 | 9 | 31.2 | 54.4 | 140 | 19 | 44 | 1.6 | 26.9 |
| 25 | 48 | 13 | 155 | 25 | 6.0 | 7.0 | 77 | 42 | 50 | 11 | 34 | 59 | 152 | 24 | 52 | 2.0 | 33.7 |
| 32 | 53 | 13 | 155 | 32 | 6.0 | 7.0 | 83 | 42 | 50 | 11 | 44 | 60.5 | 165 | 24 | 52 | 2.0 | 42.4 |
| 40 | 63 | 17 | 205 | 38 | 7.0 | 9.0 | 92 | 50 | 70 | 14 | 55 | 67.5 | 190 | 28 | 53 | 2.0 | 48.3 |
| 50 | 72 | 17 | 205 | 50 | 7.0 | 9.0 | 100 | 50 | 70 | 14 | 68.9 | 67 | 203 | 28 | 53 | 2.0 | 60.3 |
| 65 | 92 | 19 | 300 | 65 | 9.0 | 11.3 | 140 | 70 | 102 | 17 | 82 | 86 | 254 | - | 92 | 2.0 | 76.1 |
| 80 | 102 | 19 | 300 | 80 | 9.0 | 11.3 | 150 | 70 | 102 | 17 | 96 | 92 | 280 | - | 92 | 2.3 | 88.9 |
| 100 | 132 | 26 | 350 | 100 | 11.3 | 13.5 | 195 | 102 | 125 | 22 | 122 | 93 | 308 | - | 102 | 2.3 | 114.3 |

DTS 1000656928 EN Version: A Status: RL (released | freigegeben | valide) printed: 13.05.2026

4.5. Dimensions DIN 11850 series 2

Note:

Dimensions in mm



| Nominal diameter [mm] | A | B | C | D | d1 | d2 | E | F | G | H | L | L1 | LS | W | S | T |
|-----------------------|-----|----|-----|-----|------|------|-----|-----|-----|----|-------|------|------|-----|-----|-----|
| 8 | 37 | 10 | 130 | 11 | 6.0 | 6.0 | 66 | 36 | 42 | 9 | 60.5 | 24.5 | 18 | 44 | 1.5 | 13 |
| 10 | 37 | 10 | 130 | 11 | 6.0 | 6.0 | 66 | 36 | 42 | 9 | 60.5 | 24.5 | 18 | 44 | 1.5 | 13 |
| 15 | 40 | 10 | 130 | 15 | 6.0 | 6.0 | 66 | 36 | 42 | 9 | 63.5 | 24.5 | 19.5 | 44 | 1.5 | 19 |
| 20 | 48 | 10 | 130 | 20 | 6.0 | 6.0 | 69 | 36 | 42 | 9 | 75.5 | 31.5 | 22 | 44 | 1.5 | 23 |
| 25 | 53 | 13 | 155 | 25 | 6.0 | 7.0 | 77 | 42 | 50 | 11 | 86 | 34 | 26 | 52 | 1.5 | 29 |
| 32 | 63 | 13 | 155 | 32 | 6.0 | 7.0 | 82 | 42 | 50 | 11 | 103.5 | 44.1 | 29.7 | 52 | 1.5 | 35 |
| 40 | 72 | 17 | 205 | 38 | 7.0 | 9.0 | 103 | 50 | 70 | 14 | 116.5 | 55.1 | 30.7 | 53 | 1.5 | 41 |
| 50 | 92 | 17 | 205 | 50 | 7.0 | 9.0 | 112 | 50 | 70 | 14 | 138 | 69 | 34.5 | 53 | 1.5 | 53 |
| 65 | 102 | 19 | 300 | 65 | 9.0 | 11.3 | 147 | 70 | 102 | 17 | 170 | 82 | 44 | 92 | 2 | 70 |
| 80 | 102 | 19 | 300 | 80 | 9.0 | 11.3 | 157 | 70 | 102 | 17 | 192 | 96 | 48 | 92 | 2 | 85 |
| 100 | 132 | 26 | 350 | 100 | 11.3 | 13.5 | 195 | 102 | 125 | 22 | 226 | 122 | 52 | 102 | 2 | 104 |

DTS 1000656928 EN Version: A Status: RL (released | freigegeben | valide) printed: 13.05.2026

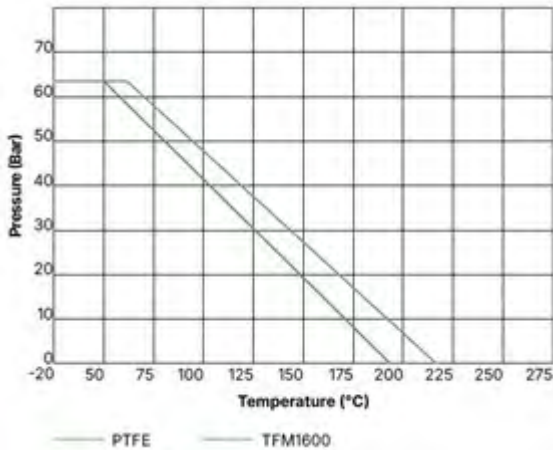
5. Performance specifications

5.1. Pressure temperature diagram ASME BPE and DIN 32676 series A

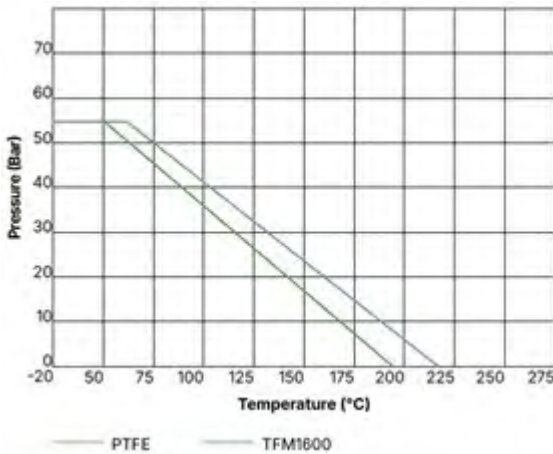
Note:

For general industrial use

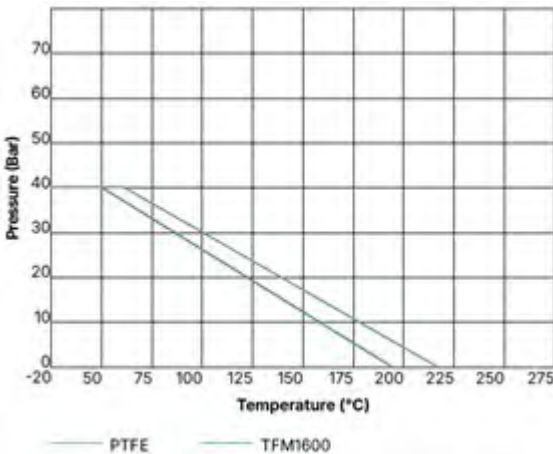
DN 15...DN 25



DN 40...DN 50



DN 65...DN 100

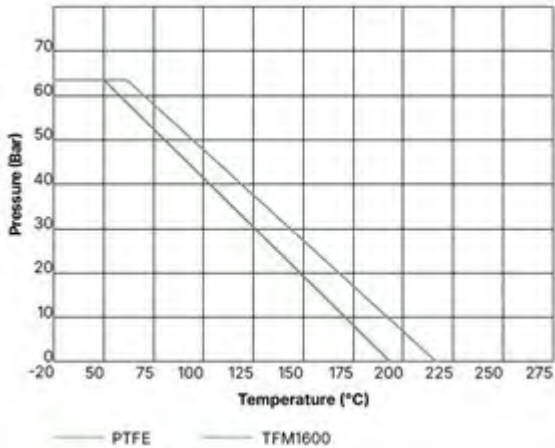


5.2. Pressure temperature diagram ISO 1127 / 4200 and DIN 11850 series 2

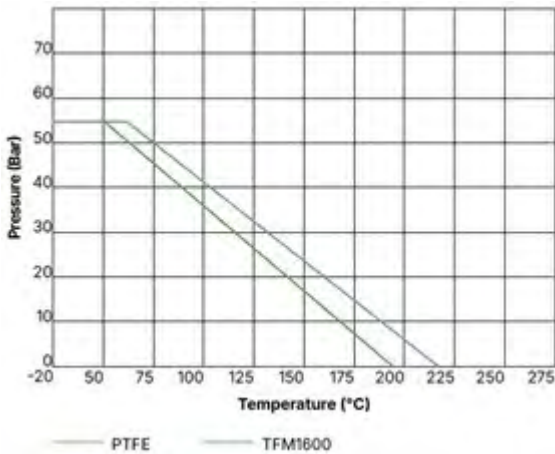
Note:

For general industrial use

DN 6...DN 50



DN 65...DN 100



5.3. Torques

Note:

We recommend that a safety factor the equivalent of 1.3 times the maximal torque is applied when selecting an actuator.

| Break torques for valves with cavity-filled and non-cavity-filled seats | | | | | | | | | | | | |
|---|---|---|----|----|----|----|------|----|----|----|-----|-----|
| Nominal diameter [mm] | 6 | 8 | 10 | 15 | 20 | 25 | 32 | 40 | 50 | 65 | 80 | 100 |
| Torque [Nm] | 6 | 6 | 6 | 7 | 10 | 13 | 18.5 | 33 | 42 | 81 | 105 | 120 |

6. Product accessories

Whilst all product accessories are available individually, these can be combined with other ball valves and accessories to offer fully assembled ball valve systems. For further information please see chapter [“7. Networking and combination with other Bürkert products” on page 18](#), or to request a specific combination please contact your local Bürkert office.

6.1. Soft parts sets

Note:

Further ordering information can be found in chapter [“8.10. Ordering chart soft parts set ASME BPE and SMS 3008” on page 23](#).

| Description | Material | Quantity | |
|-------------|------------------------------|-----------|---------|
| | Seat material PTFE | | |
| | Ball seat | PTFE | 2 |
| | Seat bush ¹⁾ | PTFE | 2 |
| | Gasket | PTFE | 2 |
| | Stem packing | TFM1600 | 1 (set) |
| | Thrust washer | TFM1600 | 1 |
| | Stem O-ring | FKM (FDA) | 1 |
| | Seat material TFM1600 | | |
| | Ball seat | TFM1600 | 2 |
| | Seat bush ¹⁾ | TFM1600 | 2 |
| | Gasket | TFM1600 | 2 |
| | Stem packing | TFM1600 | 1 (set) |
| | Thrust washer | TFM1600 | 1 |
| | Stem O-ring | FKM (FDA) | 1 |

1.) Seat bush only for DN 65...DN 150 non-filed seats

6.2. Handle sets

Note:

Further ordering information can be found in chapter [“8.13. Ordering chart handle sets” on page 24](#).

| Description | Material | |
|-------------|-----------------------|---------|
| | DN 8...DN 50 | |
| | Space washer | SS 304 |
| | Stop pin | SS 304 |
| | Stop pin nut | SS 304 |
| | Lever | SS 304 |
| | Lever nut | SS 304 |
| | DN 65...DN 100 | |
| | Space washer | SS 304 |
| | Stop pin | SS 304 |
| | Stop pin nut | SS 304 |
| | Stop plate | SS 304 |
| | Pipe lever | Steel |
| | Pipe lever cap | CF8 |
| | Lever cap set bolt | SS 304 |
| | Pipe sleeve | Plastic |

6.3. Spring return handle for direct mounting ball valve

Note:

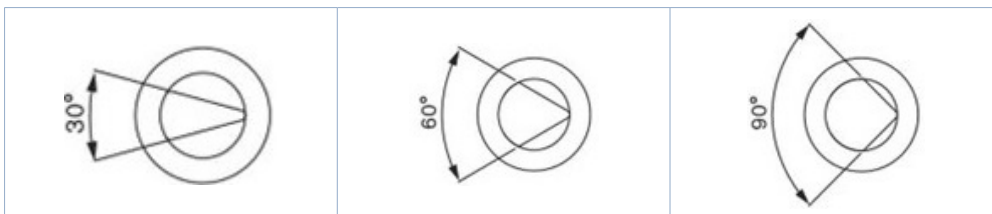
- Spring handle heavy duty design for long term operation. Designed to mount directly to an ISO 5211 mounting flange.
- Further ordering information can be found in chapter [“8.14. Ordering chart spring return handle” on page 24.](#)

| Description | Item | Part name | Materials |
|-------------|------|------------------|--------------|
| | 1 | Handle head | CF8 |
| | 2 | Anchor | CF8 |
| | 3 | Anchor screw | SS 304 |
| | 4 | Spring rod | SS 304 |
| | 5 | Spring | Spring steel |
| | 6 | Handle extension | SS 304 |
| | 7 | Handle sleeve | PVC |
| | 8 | Washer | SS 304 |
| | 9 | Nut | SS 304 |

6.4. V-ball for modulation control

Note:

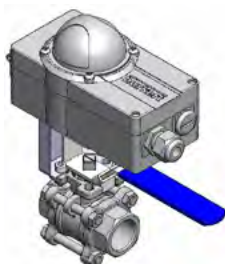
- Available in 30°, 60° and 90°
- Further ordering information can be found in chapter [“8.15. Ordering chart V-balls for modulation control ASME BPE, DIN 32676 series A and SMS 3008” on page 24.](#)



6.5. Mounting bracket for limit switch box

Note:

- Suitable for valve sizes DN 15...DN 100, the brackets are designed to mount to the ISO 5211 flange. The bracket includes an integrated handle with locking function.
- Further ordering information can be found in chapter [“8.13. Ordering chart handle sets” on page 24.](#)



6.6. Extended bonnet 75 mm

Note:

- The extended bonnet is designed to raise the hand lever / actuator from the ISO flange for thermal insulation or create space when insulation jacket / material is installed. There is no sealing function to protect against leakage from the stem. Bonnets with sealing function can be found in chapter "6.7. Fugitive emission bonnet" on page 16.
- Further ordering information can be found in chapter "8.18. Ordering chart extended bonnet 75 mm" on page 25.



6.7. Fugitive emission bonnet

Note:

- Designed to keep fugitive emissions from leaking through the stem assembly, the test port allows the sniffer to detect any fine emissions from the bonnet.
- ISO direct mount flanges on both ends of the bonnet allow for easy installation and mounting of hand lever / actuator.
- The bonnet can also be used as a normal stem extension.
- Further ordering information can be found in chapter "8.19. Ordering chart fugitive emission bonnet" on page 26.



6.8. Mounting bracket for actuation

Note:

- Various dimensions for different valve & actuator combinations.
- ISO 5211 mounting dimensions.
- Further ordering information can be found in chapter "8.20. Ordering chart mounting bracket for actuation" on page 26.



6.9. Stem coupler for mounting bracket

Note:

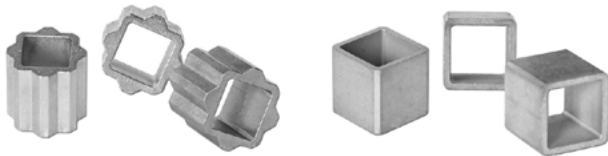
- SS 304 adaptor allows the stem to be extended to couple with the actuator when a mounting bracket is used.
- Various sizes for combination with mounting brackets.
- Further ordering information can be found in chapter ["8.21. Ordering chart stem coupler for mounting bracket"](#) on page 26.



6.10. Stem sleeve

Note:

- When the drive of the actuator is larger than the size of the stem, the stem sleeve can be used to adapt the stem dimensions to fit the actuator drive.
- Available in single square (SSQ) and double square (DSQ) versions in SS 304.
- Further ordering information can be found in chapter ["8.22. Ordering chart stem sleeves"](#) on page 27.



7. Networking and combination with other Bürkert products







Note:









The direct mounting version ball valve can be connected via the mechanical interface (according to ISO 5211) with pneumatic (e.g. Type 2051, Type 2052, Type 2053) and electrical rotary actuators (e.g. Type 3003, Type 3004, Type 3005).

Example:



Type 2654 ▶

| Type 8804 Electrical rotary actuation | | | Type 8805 Pneumatic actuation | | |
|---|---|---|---|---|---|
|  |  |  |  |  |  |
| Type 3003 ▶ Electrical actuator On/Off & Control | Type 3004 ▶ Explosion proof actuator | Type 3005 ▶ Electrical actuator On/Off & control | Type 2051 ▶ Pneumatic rotary actuator | Type 2052 ▶ Pneumatic rotary actuator | Type 2053 ▶ ELEMENT ready pneumatic actuator |

| Digital electropneumatic positioner | | Position feedback | Pilot valve | ELEMENT Process automation | | | |
|---|---|---|---|--|---|---|---|
|  |  |  |  |  |  |  |  |
| Type 8791 ▶ Type 8792 ▶ SideControl Namur | Type 8635 ▶ SideControl Namur ATEX | Type 1061 ▶ Position feedback unit for pneumatic rotary actuators | Type 6519 ▶ Servo-assisted 3/2, 5/2 or 5/3-way solenoid valve | Type 8691 ▶ Control head | Type 8692 ▶ Positioner | Type 8693 ▶ Controller | Type 8694 ▶ Positioner |

DTS 1000656928 EN Version: A Status: RL (released | freigegeben | valide) printed: 13.05.2026

8. Ordering information

8.1. Bürkert eShop



Bürkert eShop – Easy ordering and quick delivery

You want to find your desired Bürkert product or spare part quickly and order directly? Our online shop is available for you 24/7. Sign up and enjoy all the benefits.

8.2. Bürkert product filter



Bürkert product filter – Get quickly to the right product

You want to select products comfortably based on your technical requirements? Use the Bürkert product filter and find suitable articles for your application quickly and easily.

8.3. Ordering chart ASME BPE tube weld

Note:

Stainless steel CF8M with lockable hand lever

| Nominal diameter | | Article no. | | | |
|------------------|--------|-------------|--------------------|----------|-----------------------|
| [mm] | [inch] | PTFE | PTFE cavity-filled | TFM1600 | TFM1600 cavity-filled |
| 8 | 1/4" | 93953170 | 93953168 | 93950866 | 93950864 |
| 10 | 3/8" | 93953171 | 93953169 | 93950867 | 93950865 |
| 15 | 1/2" | 93954288 | 93952796 | 93952868 | 93952844 |
| 20 | 3/4" | 93954289 | 93952797 | 93952869 | 93952845 |
| 25 | 1" | 93954290 | 93952798 | 93952870 | 93952846 |
| 40 | 1 1/2" | 93954291 | 93952799 | 93952871 | 93952847 |
| 50 | 2" | 93954292 | 93952800 | 93952872 | 93952848 |
| 65 | 2 1/2" | 93954293 | 93952801 | 93952873 | 93952849 |
| 80 | 3" | 93954294 | 93952802 | 93952874 | 93952850 |
| 100 | 4" | 93954295 | 93952803 | 93952875 | 93952851 |
| 150 | 6" | 93950868 | 93954302 | 93950870 | 93950869 |

8.4. Ordering chart ASME BPE extended tube weld

Note:

Stainless steel CF8M with lockable hand lever

| Nominal diameter | | Article no. | | | |
|------------------|--------|-------------|--------------------|----------|-----------------------|
| [mm] | [inch] | PTFE | PTFE cavity-filled | TFM1600 | TFM1600 cavity-filled |
| 15 | ½" | 93954160 | 93952804 | 93952876 | 93952852 |
| 20 | ¾" | 93954161 | 93952805 | 93952877 | 93952853 |
| 25 | 1" | 93954162 | 93952806 | 93952878 | 93952854 |
| 40 | 1½" | 93954163 | 93952807 | 93952879 | 93952855 |
| 50 | 2" | 93954164 | 93952808 | 93952880 | 93952856 |
| 65 | 2½" | 93954165 | 93952809 | 93952881 | 93952857 |
| 80 | 3" | 93954166 | 93952810 | 93952882 | 93952858 |
| 100 | 4" | 93954167 | 93952811 | 93952883 | 93952859 |

8.5. Ordering chart ASME BPE clamp ferrule

Note:

Stainless steel CF8M with lockable hand lever

| Nominal diameter | | Article no. | | | |
|------------------|--------|-------------|--------------------|----------|-----------------------|
| [mm] | [inch] | PTFE | PTFE cavity-filled | TFM1600 | TFM1600 cavity-filled |
| 15 | ½" | 93954216 | 93952788 | 93952836 | 93952836 |
| 20 | ¾" | 93954217 | 93952789 | 93952837 | 93952837 |
| 25 | 1" | 93954218 | 93952790 | 93952838 | 93952838 |
| 40 | 1½" | 93954219 | 93952791 | 93952839 | 93952839 |
| 50 | 2" | 93954220 | 93952792 | 93952840 | 93952840 |
| 65 | 2½" | 93954221 | 93952793 | 93952841 | 93952841 |
| 80 | 3" | 93954222 | 93952794 | 93952842 | 93952842 |
| 100 | 4" | 93954223 | 93952795 | 93952843 | 93952843 |

8.6. Ordering chart DIN 32676 series A clamp ferrule

Note:

Stainless steel CF8M with lockable hand lever

| Nominal diameter | | Article no. | | | |
|------------------|--------|-------------|--------------------|----------|-----------------------|
| [mm] | [inch] | PTFE | PTFE cavity-filled | TFM1600 | TFM1600 cavity-filled |
| 15 | ½" | 93954264 | 93950054 | 93954272 | 93954152 |
| 20 | ¾" | 93954265 | 93950055 | 93954273 | 93954153 |
| 25 | 1" | 93954266 | 93950056 | 93954274 | 93954154 |
| 40 | 1½" | 93954267 | 93950057 | 93954275 | 93954155 |
| 50 | 2" | 93954268 | 93950058 | 93954276 | 93954156 |
| 65 | 2½" | 93954269 | 93950059 | 93954277 | 93954157 |
| 80 | 3" | 93954270 | 93950060 | 93954278 | 93954158 |
| 100 | 4" | 93954271 | 93950061 | 93954279 | 93954159 |

8.7. Ordering chart SMS 3008 tube weld

Note:

Stainless steel CF8M with lockable hand lever

| Nominal diameter | | Article no. | | | |
|------------------|--------|-------------|--------------------|----------|-----------------------|
| [mm] | [inch] | PTFE | PTFE cavity-filled | TFM1600 | TFM1600 cavity-filled |
| 15 ¹⁾ | 1/2" | 93950197 | 93950205 | 93950213 | 93950221 |
| 20 | 3/4" | 93950198 | 93950206 | 93950214 | 93950222 |
| 25 | 1" | 93950199 | 93950207 | 93950215 | 93950223 |
| 40 | 1 1/2" | 93950200 | 93950208 | 93950216 | 93950224 |
| 50 | 2" | 93950201 | 93950209 | 93950217 | 93950225 |
| 65 | 2 1/2" | 93950202 | 93950210 | 93950218 | 93950226 |
| 80 | 3" | 93950203 | 93950211 | 93950219 | 93950227 |
| 100 | 4" | 93950204 | 93950212 | 93950220 | 93950228 |

1.) Customized design

8.8. Ordering chart ISO 1127 / 4200 tube weld

Note:

Stainless steel CF8M with lockable hand lever

| Nominal diameter | | Article no. | | | |
|------------------|--------|-------------|--------------------|----------|-----------------------|
| [mm] | [inch] | PTFE | PTFE cavity-filled | TFM1600 | TFM1600 cavity-filled |
| 6 | 1/8" | 93950651 | 93950663 | 93950675 | 93950687 |
| 8 | 1/4" | 93950652 | 93950664 | 93950676 | 93950688 |
| 10 | 3/8" | 93950653 | 93950665 | 93950677 | 93950689 |
| 15 | 1/2" | 93950654 | 93950666 | 93950678 | 93950690 |
| 20 | 3/4" | 93950655 | 93950667 | 93950679 | 93950691 |
| 25 | 1" | 93950656 | 93950668 | 93950680 | 93950692 |
| 32 | 1 1/4" | 93950657 | 93950669 | 93950681 | 93950693 |
| 40 | 1 1/2" | 93950658 | 93950670 | 93950682 | 93950694 |
| 50 | 2" | 93950659 | 93950671 | 93950683 | 93950695 |
| 65 | 2 1/2" | 93950660 | 93950672 | 93950684 | 93950696 |
| 80 | 3" | 93950661 | 93950673 | 93950685 | 93950697 |
| 100 | 4" | 93950662 | 93950674 | 93950686 | 93950698 |

8.9. Ordering chart DIN 11850 series 2 tube weld

Note:

Stainless steel CF8M with lockable hand lever

| Nominal diameter | | Article no. | | | |
|------------------|--------|-------------|--------------------|----------|-----------------------|
| [mm] | [inch] | PTFE | PTFE cavity-filled | TFM1600 | TFM1600 cavity-filled |
| 8 | ¼" | 93956381 | 93953657 | 93953446 | 93953667 |
| 15 | ½" | 93956382 | 93953658 | 93953447 | 93953668 |
| 20 | ¾" | 93956383 | 93953659 | 93953448 | 93953669 |
| 25 | 1" | 93956384 | 93953660 | 93953449 | 93953670 |
| 32 | 1¼" | 93956385 | 93953661 | 93953450 | 93953671 |
| 40 | 1½" | 93956386 | 93953662 | 93953451 | 93953672 |
| 50 | 2" | 93956387 | 93953663 | 93953452 | 93953673 |
| 65 | 2½" | 93956388 | 93953664 | 93953453 | 93953674 |
| 80 | 3" | 93956389 | 93953665 | 93953454 | 93953675 |
| 100 | 4" | 93956390 | 93953666 | 93953455 | 93953676 |

Further versions on request

| | | | |
|--|--|--|--|
| | <p>Version</p> <p>Actuated valve assemblies</p> <ul style="list-style-type: none"> • pneumatic actuated valves • electrically actuated valves | | <p>Port connection</p> <p>Special combination port connections</p> <ul style="list-style-type: none"> • example BW x Clamp |
|--|--|--|--|

8.10. Ordering chart soft parts set ASME BPE and SMS 3008

Note:

Further information can be found in chapter "6.1. Soft parts sets" on page 14.

| Description | Nominal diameter | | Article no. | | | |
|-------------|------------------|--------|-------------|--------------------|----------|-----------------------|
| | [mm] | [inch] | PTFE | PTFE cavity-filled | TFM1600 | TFM1600 cavity-filled |
| | 15 | 1/2" | 93920101 | 93920093 | 93920493 | 93920485 |
| | 20 | 3/4" | 93920102 | 93920094 | 93920494 | 93920486 |
| | 25 | 1" | 93920103 | 93920095 | 93920495 | 93920487 |
| | 40 | 1 1/2" | 93920104 | 93920096 | 93920496 | 93920488 |
| | 50 | 2" | 93920105 | 93920097 | 93920497 | 93920489 |
| | 65 | 2 1/2" | 93920106 | 93920098 | 93920498 | 93920490 |
| | 80 | 3" | 93920107 | 93920099 | 93920499 | 93920491 |
| | 100 | 4" | 93920108 | 93920100 | 93920500 | 93920492 |

8.11. Ordering chart soft parts set DIN 32676 series A

Note:

Further information can be found in chapter "6.1. Soft parts sets" on page 14.

| Description | Nominal diameter | | Article no. | | | |
|-------------|------------------|--------|-------------|--------------------|----------|-----------------------|
| | [mm] | [inch] | PTFE | PTFE cavity-filled | TFM1600 | TFM1600 cavity-filled |
| | 15 | 1/2" | 93920102 | 93920094 | 93920494 | 93920486 |
| | 20 | 3/4" | 93920103 | 93920095 | 93920495 | 93920487 |
| | 25 | 1" | 93920103 | 93920095 | 93920495 | 93920487 |
| | 40 | 1 1/2" | 93920104 | 93920096 | 93920496 | 93920488 |
| | 50 | 2" | 93920105 | 93920097 | 93920497 | 93920489 |
| | 65 | 2 1/2" | 93920106 | 93920098 | 93920498 | 93920490 |
| | 80 | 3" | 93920107 | 93920099 | 93920499 | 93920491 |
| | 100 | 4" | 93920108 | 93920100 | 93920500 | 93920492 |

8.12. Ordering chart soft parts set ISO 1127 / 4200 and DIN 11850 series 2

Note:

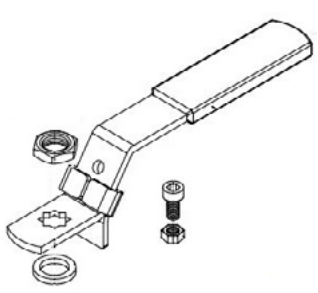
Further information can be found in chapter "6.1. Soft parts sets" on page 14.

| Description | Nominal diameter | | Article no. | | | |
|-------------|------------------|--------|-------------|--------------------|----------|-----------------------|
| | [mm] | [inch] | PTFE | PTFE cavity-filled | TFM1600 | TFM1600 cavity-filled |
| | 6 | 1/8" | 93920117 | 93922350 | 93920128 | 93922362 |
| | 8 | 1/4" | 93920117 | 93922351 | 93920128 | 93922363 |
| | 10 | 3/8" | 93920118 | 93922352 | 93920129 | 93922364 |
| | 15 | 1/2" | 93920119 | 93922353 | 93920130 | 93922365 |
| | 20 | 3/4" | 93920120 | 93922354 | 93920131 | 93922366 |
| | 25 | 1" | 93920121 | 93922355 | 93920132 | 93922367 |
| | 32 | 1 1/4" | 93920122 | 93922356 | 93920133 | 93922368 |
| | 40 | 1 1/2" | 93920123 | 93922357 | 93920134 | 93922369 |
| | 50 | 2" | 93920124 | 93922358 | 93920135 | 93922370 |
| | 65 | 2 1/2" | 93920125 | 93922359 | 93920136 | 93922371 |
| | 80 | 3" | 93920126 | 93922360 | 93920137 | 93922372 |
| | 100 | 4" | 93920127 | 93922361 | 93920138 | 93922373 |

8.13. Ordering chart handle sets

Note:

Further information can be found in chapter "6.2. Handle sets" on page 14.


| Description | Nominal diameter | | Article no. |
|---|------------------|--------|-------------|
| | [mm] | [inch] | |
|  | 6 | 1/8" | 93922129 |
| | 8 | 1/4" | 93922129 |
| | 10 | 3/8" | 93922130 |
| | 15 | 1/2" | 93922131 |
| | 20 | 3/4" | 93922132 |
| | 25 | 1" | 93922133 |
| | 32 | 1 1/4" | 93922134 |
| | 40 | 1 1/2" | 93922135 |
| | 50 | 2" | 93922136 |
| | 65 | 2 1/2" | 93922137 |
| | 80 | 3" | 93922138 |
| | 100 | 4" | 93922139 |
| | 150 | 6" | 93922139 |

1.) For DIN 32676 series A 3/4" use 1" handle set

8.14. Ordering chart spring return handle

Note:


Further information can be found in chapter "6.3. Spring return handle for direct mounting ball valve" on page 15.

| Description | Size | Torque | Stem | ISO flange | Article no. |
|---|------|--------|--------|------------|-------------|
| | | [Nm] | [mm □] | [5211] | |
|  | 10 | 15 | 09 | F03 / F04 | 93921519 |
| | 20 | 20 | 11 | F04 / F05 | 93921520 |
| | 30 | 30 | 14 | F05 / F07 | 93921521 |
| | 40 | 100 | 17/22 | F10 / F12 | 93921522 |

8.15. Ordering chart V-balls for modulation control ASME BPE, DIN 32676 series A and SMS 3008

Note:


- Further information can be found in chapter "6.4. V-ball for modulation control" on page 15.
- 30° and 90° on request

| Description | Nominal diameter | Article no. |
|---|------------------|-------------|
| | [mm] | |
|  | 15 | 93921016 |
| | 20 | 93921017 |
| | 25 | 93921018 |
| | 40 | 93921019 |
| | 50 | 93921020 |
| | 65 | 93921021 |
| | 80 | 93921022 |
| | 100 | 93921023 |

8.16. Ordering chart V-balls for modulation control ISO 1127 / 4200 and DIN 11850

Note:

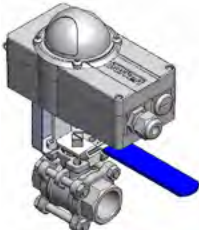
Further information can be found in chapter "6.4. V-ball for modulation control" on page 15.

| Description | Nominal diameter [mm] | Article no. | | |
|---|--------------------------|-------------|----------|----------|
| | | V-30° | V-60° | V-90° |
|  | 6 | 93920399 | 93920416 | 93920431 |
| | 8 | 93920399 | 93920416 | 93920431 |
| | 10 | 93920400 | 93920417 | 93920432 |
| | 15 | 93920401 | 93920418 | 93920433 |
| | 20 | 93920402 | 93920419 | 93920434 |
| | 25 | 93920406 | 93920421 | 93920436 |
| | 32 | 93920409 | 93920424 | 93920439 |
| | 40 | 93920410 | 93920425 | 93920440 |
| | 50 | 93920411 | 93920426 | 93920441 |
| | 65 | 93920412 | 93920427 | 93920442 |
| | 80 | 93920413 | 93920428 | 93920443 |
| | 100 | 93920414 | 93920429 | 93920444 |
| | 150 | 93920414 | 93920429 | 93920444 |

8.17. Ordering chart mounting bracket for limit switch box

Note:


Further information can be found in chapter "6.5. Mounting bracket for limit switch box" on page 15.

| Description | Size | Stem | ISO flange | Article no. |
|---|------|--------|------------|-------------|
| | | [mm □] | [5211] | |
|  | 01 | 09 | F04 | 93920873 |
| | 02 | 11 | F05 | 93920874 |
| | 03 | 14 | F05 / F07 | 93920875 |
| | 04 | 17 | F07 / F10 | 93920876 |
| | 05 | 22 | F10 / F12 | 93920877 |

8.18. Ordering chart extended bonnet 75 mm

Note:







Further information can be found in chapter "6.6. Extended bonnet 75 mm" on page 16.

| Description | Size | Stem | ISO flange | ISO flange | Article no. |
|---|------|--------|--------------|-----------------|-------------|
| | | [mm □] | [valve side] | [actuator side] | |
|  | 01 | 09 | F04 | F03 / F04 | 93921805 |
| | 02 | 11 | F05 | F04 / F05 | 93921806 |
| | 03 | 14 | F07 | F05 / F07 | 93921807 |
| | 04 | 17 | F10 | F07 / F10 | 93921808 |
| | 05 | 22 | F12 | F10 / F12 | 93921809 |

8.19. Ordering chart fugitive emission bonnet

Note:






Further information can be found in chapter "6.7. Fugitive emission bonnet" on page 16.

| Description | Size | Stem | ISO flange | ISO flange | Article no. |
|---|------|--------|--------------|-----------------|--|
| | | [mm □] | [valve side] | [actuator side] | |
|  | 01 | 09 | F04 | F03 / F04 | 93920709  |
| | 02 | 11 | F05 | F04 / F05 | 93920710  |
| | 03 | 14 | F07 | F05 / F07 | 93920711  |
| | 04 | 17 | F10 | F07 / F10 | 93920712  |
| | 05 | 22 | F12 | F10 / F12 | 93920713  |

8.20. Ordering chart mounting bracket for actuation

Note:









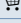
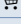
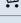
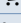
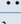
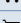
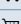
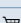

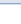
Further information can be found in chapter "6.8. Mounting bracket for actuation" on page 16.

| Description | Size | ISO flange | ISO flange | Height | Article no. |
|--|------|-----------------|-----------------|--------|--|
| | | [valve side] | [actuator side] | [mm] | |
|  | 01 | F03 / F04 / F05 | F03 / F04 / F05 | 70 | 93920557  |
| | 02 | F04 / F05 / F07 | F04 / F05 / F07 | 70 | 93920558  |
| | 03 | F04 / F05 / F07 | F04 / F05 / F07 | 40 | 93920990  |
| | 04 | F07 / F10 / F12 | F07 / F10 / F12 | 70 | 93920559  |

8.21. Ordering chart stem coupler for mounting bracket

Note:

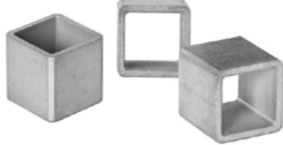




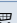
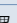
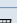
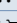
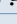



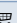
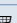
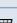
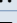
Further information can be found in chapter "6.9. Stem coupler for mounting bracket" on page 17.

| Description | Shaft size | Drive size | Height | For bracket height | Article no. |
|---|------------|------------|--------|--|--|
| | [mm □] | [mm □] | [mm] | [mm] | |
|  | 9 | 9 | 48 | 40 | 93920973  |
| | 9 | 11 | 50 | 40 | 93920974  |
| | 11 | 11 | 50 | 40 | 93920975  |
| | 9 | 14 | 55 | 40 | 93920976  |
| | 11 | 14 | 55 | 40 | 93920977  |
| | 14 | 14 | 55 | 40 | 93920978  |
| | 9 | 17 | 88 | 70 | 93920979  |
| | 11 | 17 | 88 | 70 | 93920980  |
| | 14 | 17 | 88 | 70 | 93920981  |
| | 17 | 17 | 58 | 40 | 93920982  |
| | 17 | 17 | 88 | 70 | 93920983  |
| | 14 | 22 | 93 | 70 | 93920984  |
| | 17 | 22 | 93 | 70 | 93920985  |
| | 17 | 27 | 98 | 70 | 93920986  |
| | 22 | 22 | 93 | 70 | 93920987  |
| | 22 | 27 | 98 | 70 | 93920988  |
| 22 | 36 | 107 | 70 | 93920989  | |

8.22. Ordering chart stem sleeves

Note:

Further information can be found in chapter "6.10. Stem sleeve" on page 17.

| Description | Inside | Outside | Article no. |
|---|--------|---------|--|
| | [mm □] | [mm □] | |
| Single square (SSQ) version | | | |
|  | 9 | 11 | 666575  |
| | 9 | 14 | 93921485  |
| | 11 | 14 | 665291  |
| | 11 | 17 | 665369  |
| | 14 | 17 | 665290  |
| | 17 | 22 | 672306  |
| | 17 | 27 | 774193  |
| | 22 | 27 | 678023  |
| | 27 | 36 | 93913966  |
| Double square (DSQ) version | | | |
|  | 9 | 14 | 665288  |
| | 11 | 14 | 665289  |
| | 11 | 22 | 773344  |
| | 14 | 17 | 773348  |
| | 14 | 22 | 666684  |
| | 17 | 22 | 666685  |