



Double pilot controlled check valve for realising 5/3-way function with all ports blocked

- Compact design
- For single valve or valve unit
- Fast reaction times
- High degree of tightness throughout service life
- With manual override



Product variants described in the data sheet may differ from the product presentation and description.

Can be combined with

	Type 8647 AirLINE SP – electropneumatic automation system	▶
	Type 8650 AirLINE Ex – electropneumatic automation system for use in potentially explosive areas	▶
	Type 8652 AirLINE – the valve island optimised for process automation	▶
	Type 8653 AirLINE Field – the valve island – optimised for process automation	▶

Type description

Two check valves are integrated in Type 0498. If this double pilot controlled check valve is combined with two 3/2-way valves, a 5/3-way function with all parts blocked (circuit function L) can then be released.

DTS 1000085808 EN Version: C Status: RL (released | freigegeben | validé) printed: 18.12.2024

Table of contents

1. General technical data	3
2. Approvals and conformities	3
2.1. General notes	3
2.2. Conformity	3
2.3. Standards	3
3. Dimensions	4
4. Product design and assembly	5
4.1. Application examples	5
5. Ordering information	5
5.1. Bürkert eShop	5
5.2. Bürkert product filter	5
5.3. Ordering chart	5

DTS 1000085808 EN Version: C Status: RL (released | freigegeben | validé) printed: 18.12.2024

1. General technical data

Product properties	
Dimensions	Further information can be found in chapter "3. Dimensions" on page 4.
Material	
Seal	NBR
Body	Polyamide
Manual override	Standard
Weight	33 g (45 g with mounting base)
Nominal diameter	DN 4.0
Performance data	
Flow-rate air (Q_{NR})	Measurement at + 20 °C, 6 bar pressure at valve inlet and 1 bar differential pressure
Pressure values	Overpressure with respect to ambient pressure
Switching time	Measurement according to ISO 12238
Medium data	
Operating medium	Lubricated or oil-free compressed dry air and neutral gases (5 µm filter recommended)
Medium temperature	- 10...+ 50 °C
Process/Port connection & communication	
Port connection	Push-in Ø 6 mm
Environment and installation	
Installation position	As required
Mounting	Circuit installation or optionally with mounting base
Ambient temperature	- 10...+ 55 °C

2. Approvals and conformities

2.1. General notes

- The approvals and conformities listed below must be stated when making enquiries. This is the only way to ensure that the product complies with all required specifications.
- Not all available versions can be supplied with the below mentioned approvals or conformities.

2.2. Conformity

In accordance with the Declaration of Conformity, the product is compliant with the EU Directives.

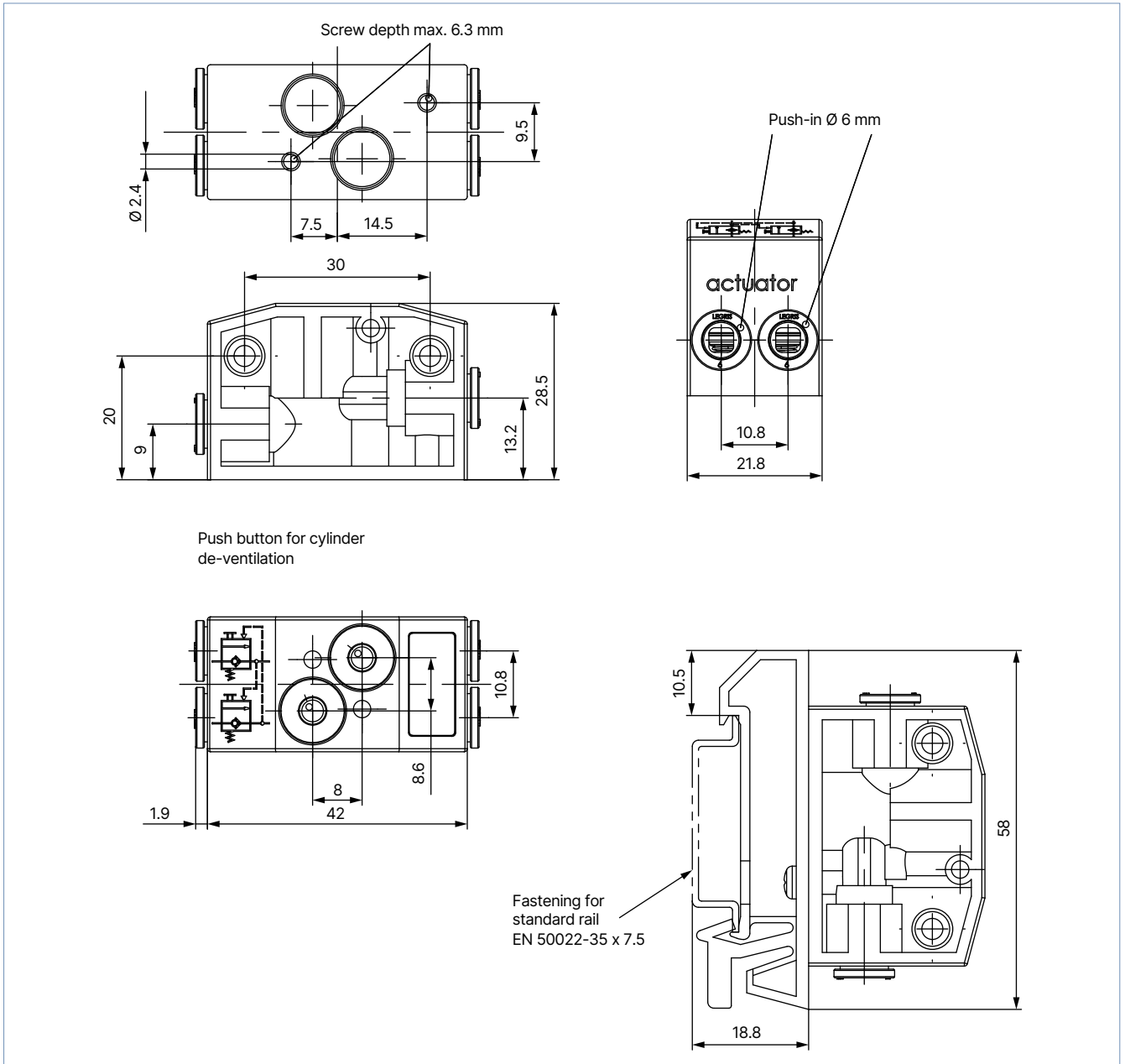
2.3. Standards

The applied standards which are used to demonstrate compliance with the EU Directives are listed in the EU-Type Examination Certificate and/or the EU Declaration of Conformity.

3. Dimensions

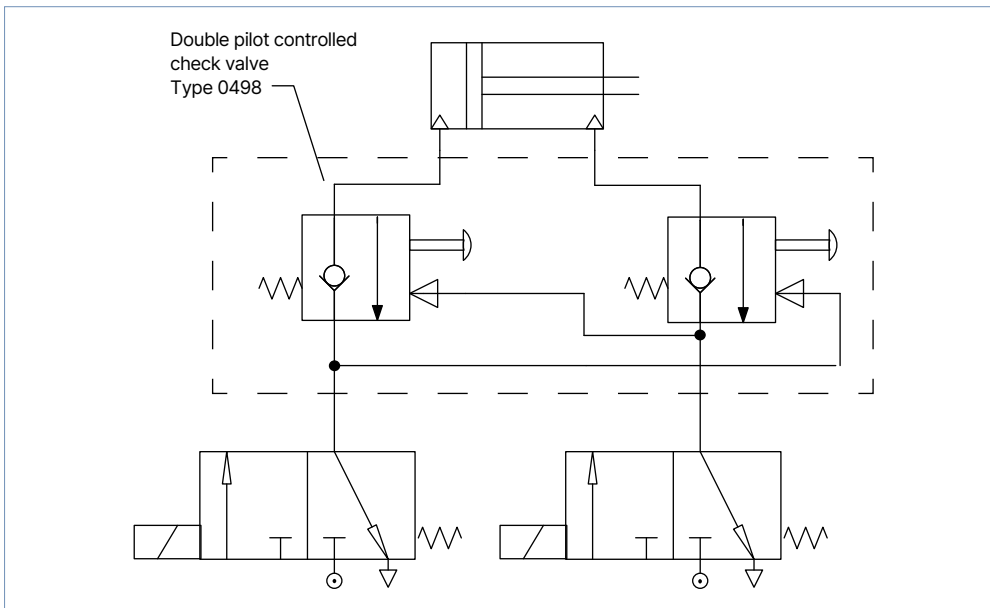
Note:

Dimensions in mm



4. Product design and assembly

4.1. Application examples



5. Ordering information

5.1. Bürkert eShop



Bürkert eShop – Easy ordering and quick delivery

You want to find your desired Bürkert product or spare part quickly and order directly? Our online shop is available for you 24/7. Sign up and enjoy all the benefits.

[Order online now](#)

5.2. Bürkert product filter



Bürkert product filter – Get quickly to the right product

You want to select products comfortably based on your technical requirements? Use the Bürkert product filter and find suitable articles for your application quickly and easily.

[Try out our product filter](#)

5.3. Ordering chart

Version	Port connection	DN [mm]	Flow rate [l/min]	Pressure range [bar]	Article no.
Without mounting base	Push-in 6 mm	4	300	2...10	167126
With mounting base	Push-in 6 mm	4	300	2...10	167127