




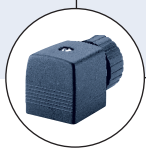




- Direct-acting
- High cycling rate
- NC, NO or universal circuit function
- Push-over solenoid system
- Threaded port or sub-base connection
- Approvals:     

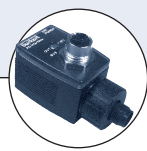
Type 6014 can be combined with...



**Type 2508**  
Cable plug



**Type 1078**  
Timer unit



**Type 2511**  
ASI cable plug

Direct-acting Type 6014 valve for individual or manifold mounting with push-over coil, for use with a variety of media depending on the materials of construction. Delivered in various body materials and also suitable for use in technical vacuum.

Power consumption			
Coil Power [W]	Inrush		Hold
	AC [VA]	AC [VA/W]	DC [W]
8	24	17/8	8

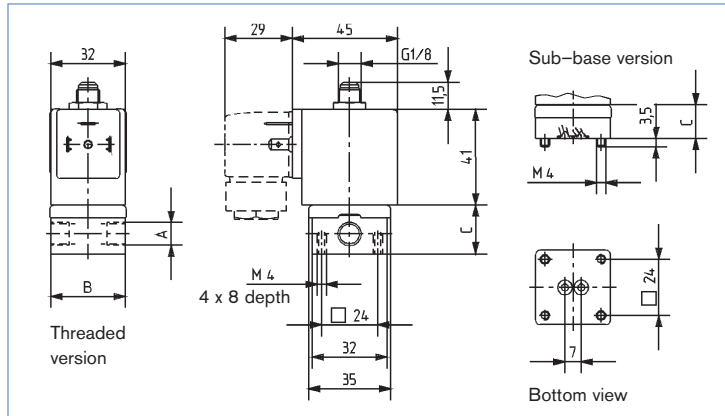
Technical data	
<b>Orifice</b>	DN 1.5 – 2.5
<b>Body material</b>	Brass, stainless steel, polyamide (manifold version only)
<b>Sealing material</b>	FKM
<b>Media</b>	Neutral gases and liquids
<b>Medium temperature</b>	14°F to 212°F (-10°C to 100°C)
<b>Ambient temperature</b>	max. 131°F (55°C)
<b>Voltage tolerance</b>	± 10%
<b>Duty cycle</b>	100% continuous rating Intermittent operation 60%
<b>Electrical connection</b>	Spade connector acc. to DIN 43650 A for Type 2508 cable plug (see accessories)
<b>Installation</b>	as required, preferably with actuator upright
<b>Protection class</b>	IP 65 with cable plug

#### Burkert Contromatic USA

2602 McGaw Avenue  
Irvine, CA 92614  
Tel. 949.223.3100  
Fax 949.223.3198  
www.burkert-usa.com

Dimensions [mm]

Dimensions [mm]			
Version	A [NPT]	B	C
Threaded port without manual override	1/8	32	20.8
	1/4	46	26.8
Threaded port with manual override	1/8	32	20.8
	1/4	46	26.8
Sub-base	-	32	14.3



Ordering chart for valves (other versions on request)

with brass body, threaded port connections, FKM seal material, without cable plug (see accessories)

Circuit function	Orifice [mm]	Port connection	C <sub>v</sub> value Water [GPM]	Pressure range [PSI] <sup>1)</sup>	Body material	Effective coil power [W]	Voltage/frequency [V/Hz]	Item no. without manual override UR/CSA/CE	Item no. without manual override UL/FM/CSA/CE	
C 3/2-way valve NC	1.5	NPT 1/8	0.08	0 – 145	Brass	8	24/DC	467 100	456 570	
							24/60	466 399	456 571	
							120/60	466 402	456 572	
		2.0	NPT 1/8	0.13	0 – 145	Brass	8	24/DC	466 447	456 574
								24/60	467 102	456 575
								120/60	467 103	456 576
	NPT 1/4		0.13	0 – 145	Brass	8	24/60	467 104	456 577	
							24/DC	466 290	456 578	
							24/60	467 105	456 579	
	2.5	NPT 1/8	0.18	0 – 87	Brass	8	120/60	466 298	456 580	
							24/60	467 106	456 581	
							24/DC	463 833	456 582	
NPT 1/4		0.18	0 – 87	Brass	8	24/60	467 107	456 583		
						120/60	463 834	456 584		
						24/DC	467 108	456 585		
D 3/2-way valve NO	1.5	NPT 1/8	0.08	0 – 232	Brass	8	24/60	466 682	456 586	
							24/DC	467 109	456 587	
							120/60	466 682	456 588	
		2.0	NPT 1/8	0.13	0 – 145	Brass	8	24/60	459 256	456 589
								24/DC	467 110	456 594
								120/60	467 111	456 596
	NPT 1/4		0.13	0 – 145	Brass	8	24/DC	466 446	456 598	
							120/60	467 112	456 600	
							24/DC	467 113	456 602	
	2.5	NPT 1/8	0.18	0 – 87	Brass	8	120/60	456 373	456 604	
							24/DC	467 114	456 606	
							120/60	467 115	456 608	
NPT 1/4		0.18	0 – 87	Brass	8	24/DC	466 781	456 610		
						120/60	466 683	456 612		
						24/DC	*	456 618		
T 3/2-way universal valve	1.5	NPT 1/8	0.08	0 – 101	Brass	8	24/60	*	456 619	
							120/60	*	456 620	
							24/60	*	456 621	
							240/60	*	456 621	

\* available on request

## Ordering chart for valves

Ordering chart for valves									
Valves with stainless steel body, threaded port connection, FKM seal material									
Circuit function	Orifice [mm]	Port connection	C <sub>v</sub> value Water [GPM]	Pressure range [PSI] <sup>1)</sup>	Body material	Effective coil power [W]	Voltage/frequency [V/Hz]	Item no. without manual override UR/CSA/CE	Item no. without manual override UL/FM/CSA/CE
C 3/2-way valve NC	1.5	NPT 1/8	0.08	0 – 232	Stainless steel	8	24/DC	456 423	456 646
							24/60	456 424	456 647
							120/60	456 425	456 648
							240/60	456 426	456 649
	2.0	NPT 1/8	0.13	0 – 145	Stainless steel	8	24/DC	456 427	456 650
							24/60	456 428	456 651
							120/60	456 429	456 652
							240/60	456 430	456 653
	NPT 1/4	0.13	0 – 145	Stainless steel	8	24/DC	456 431	456 654	
						24/60	456 432	456 655	
						120/60	456 433	456 656	
						240/60	456 434	456 657	
T 3/2-way universal valve	1.5	NPT 1/8	0.08	0 – 101	Stainless steel	8	24/DC	*	456 658
							24/60	*	*
							120/60	*	456 660
							240/60	*	*
Valves with brass body, sub-base connection, FKM seal material									
C 3/2-way valve NC	1.5	Manifold	0.08	0 – 145	Brass	8	24/DC	467 124	456 622
							24/60	456 409	456 623
							120/60	466 872	456 624
							240/60	467 125	456 625
	2.0	Manifold	0.13	0 – 145	Brass	8	24/DC	466 359	456 626
							24/60	467 126	456 627
							120/60	467 127	456 628
							240/60	467 128	456 629
D 3/2-way valve NO	2.0	Manifold	0.13	0 – 145	Brass	8	24/DC	*	*
							24/60	*	*
							120/60	*	*
							240/60	*	*

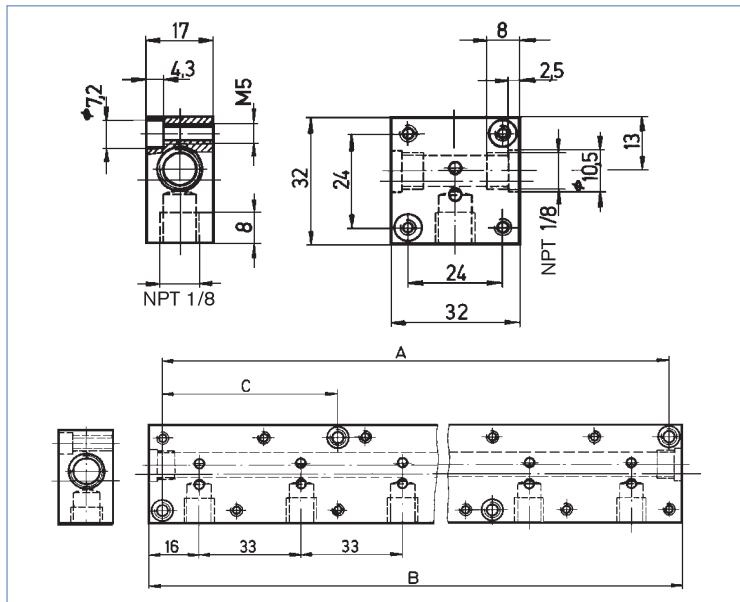
- See 2508 or 2509 series data sheets for cable plug ordering charts.
  - All UL listed/FM/CSA/CE approved valves include 1/2" conduit plug Type 2509.
  - All UR/CSA/CE approved valves include cable plug Type 2508.
- \* available on request

Valve version charts

Valve version		Max. operating pressure [PSI] for valve application				
Basic version		in circuit function				
DN	Circuit function	A	B	C	D	T
1.5	C	232	319	232	29	29
	D	29	36.3	29	232	29
	T	145	232	145	87	87
2.0	C	145	203	145	14.5	14.5
	D	14.5	21	14.5	145	14.5
	T	87	145	87	58	58
2.5	C	87	130.5	87	10	10
	D	10	14.5	10	87	10
	T	50.7	87	50.7	36.3	36.3

Utilisation in another circuit function

Valves with circuit functions (WW) C, D and T are fitted with different springs. If used in some other circuit function, the permissible operating pressure may change (see table above).



Circuit function	Connection type		
	*	**	***
A	P	blank off	A
B	blank off	B	P
C	p	R	A
D	R	P	B
T	P	R	A

Connections

For the positions marked with \*, \*\* or \*\*\* in the drawing, the connections are marked with the letters shown in the table above, depending on the circuit function. Unused connections in circuit functions A or B will be closed off with a blanking plug or cap nut.

Manifold mounting

With manifold mounting, please comply with the permissible duty cycle. The pressure port for the manifold is designated with P (R), and the outlet port with A (B). Only connect together ports with the same designation.

2/2-way valves of Type 6013 can be operated together on a manifold with 3/2-way valves of Type 6014, circuit function C (not D or T) if the operating pressures agree according to the rating plates. The manifolds can also be expanded if the valve functions are taken into consideration. Connector nipples with O-rings are used to connect the P (R) ports. Caution! Unused, open valve ports must be closed off with covering plates (see Accessories).

Ordering chart for accessories

Accessories	Features				Item no.
Single manifold	from aluminium				613 827
Multiple manifold	from aluminium	Hole spacing A [mm]	Total length B [mm]	Hole spacing C [mm]	
	2 valves	57	65	-	006 104
	3 valves	90	98	-	613 828
	4 valves	123	131	-	006 106
	5 valves	156	164	57	613 829
	6 valves	189	197	-	613 598
	8 valves	255	263	-	613 831
Connector nipple	with O-ring, for the connection of manifolds				005 040
Covering plate	with screws and O-ring for closing off unused valve positions				005 630

In case of special application conditions, please consult for advice.

We reserve the right to make technical changes without notice.

0602/2\_US-en