

## Cable plug DIN EN 175301-803

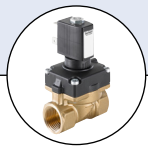


- Protection class IP65
- With approvals: UR, CSA, VDE
- Easy to install
- Also available with moulded-on cable connection

Type 2516 can be combined with...



Type 6011



Type 6211



Type 6212



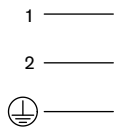
Type 6228

Plug-in connection for the connection of electrical components according to DIN EN 175301-803 Form C (previously DIN 43650).

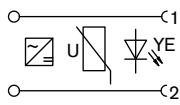
| Technical data              |   |
|-----------------------------|---|
| Body material               | Polyamide                                 |
| Contact material            | Brass                                     |
| Cable diameter              | 4.5...6 mm                                |
| Temperature range (ambient) |   |
| Plug                        | -40°...+125 °C                            |
| Seal                        | -25°...+90 °C                             |
| Functional display          | LED, colour yellow                        |
| Nominal voltage             | 0...250 V                                 |
| Maximum current rating      | without circuitry: 6 A<br>with diode: 3 A |
| Contact resistance          | ≤10 mΩ                                    |
| Electrical connection       | Terminal screws                           |
| Protection class            | IP65                                      |
| Number of terminals         | 2 pins + protective earth                 |

Circuit

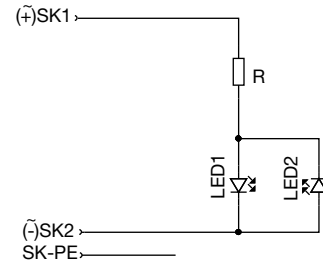
Without circuitry



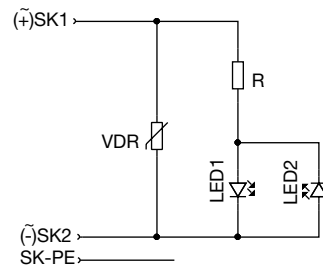
With rectifier, varistor and LED



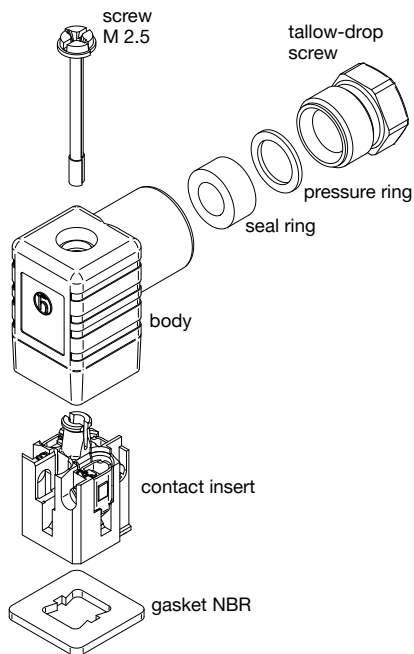
With LED



With LED and varistor

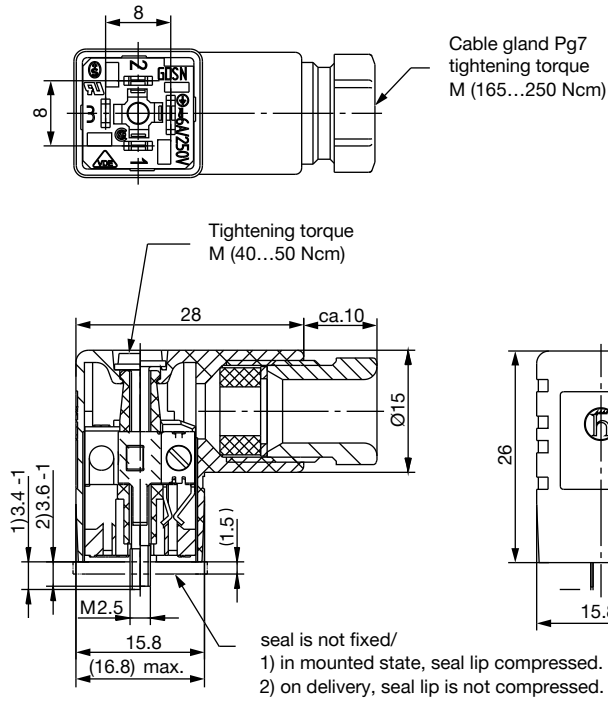


Explosion drawing

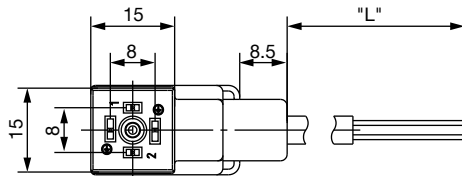


Dimensions [mm]

Without cable



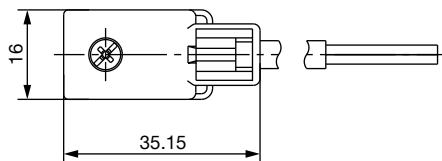
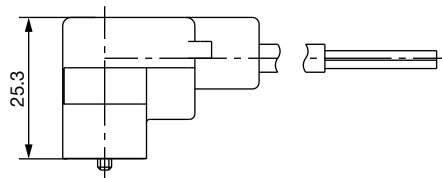
With cable



Cable length

|   |     |
|---|-----|
| L | 3 m |
|---|-----|

5 m and 10 m on request




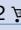










Note:

For appliance plugs with moulded cable  
no additional gasket is required.  
The seal is moulded onto the cable head.

## Ordering chart

The delivery of a cable plug includes the flat seal and fixing screw

| Voltage                                 | Current rating | Article no.<br>without cable   | Article no.<br>with 2 m<br>cable   | Article no.<br>with 3 m<br>cable   |
|---|----------------|--|--|--|
| <b>Without circuitry</b>                |                |  |  |  |
| 0...250 V AC/DC                         | max. 6 A       | 303141  | 303161  | -  |
| <b>With LED</b>                         |                |  |  |  |
| 12...24 V AC/DC                         | max. 3 A       | 303145  | 303162  | -  |
| 100...120 V AC/DC                       | max. 3 A       | 303146  | -  | -  |
| 200...240 V AC/DC                       | max. 3 A       | 303147  | -  | -  |
| <b>With rectifier, varistor and LED</b> |                |  |  |  |
| 12...24 V AC/DC                         | max. 1 A       | -  | -  | 303142  |
| 100...120 V AC/DC                       | max. 1 A       | -  | -  | 303143  |
| 200...240 V AC/DC                       | max. 1 A       | -  | -  | 303144  |
| <b>With LED and varistor</b>            |                |  |  |  |
| 12...24 V AC/DC                         | max. 3 A       | 303148  | -  | -  |
| 100...120 V AC/DC                       | max. 3 A       | 303149  | -  | -  |
| 200...240 V AC/DC                       | max. 3 A       | 303150  | -  | -  |

To find your nearest Bürkert facility, click on the orange box →

[www.burkert.com](http://www.burkert.com)

In case of special application conditions,  
please consult for advice.

Subject to alteration.  
© Christian Bürkert GmbH & Co. KG

1807/4\_EU-en\_00895325