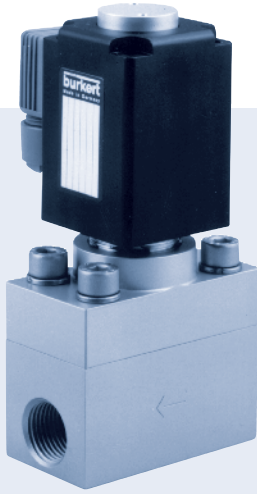


## 2/2-way Solenoid valve



- For high pressures
- Servo-assisted

The servo-assisted Type 2400 valve has a servo-piston with a 2-way servo-control. It is designed for high pressures.

The speciality of this valve design lies in the layout of the seat and sealing element. An additional radial seal make very good sealing possible.

The tapered sealing element of the servo-control permits the switching of high pressure at relatively low coil power.

Technical data	
<b>Body material</b>	stainless steel, brass and stainless steel, nickel-plated
<b>Valve internals</b>	stainless steel
<b>Sealing material</b>	PEEK/FKM; PCTFE/FKM; PTFE/FKM
<b>Media</b>	neutral gases and fluids
<b>Medium temperature</b>	
PEEK/FKM	14°F up to 176°F (-10°C up to +80°C)
PCTFE/FKM	14°F up to 176°F (-10°C up to +80°C)
PTFE/FKM	14°F up to 176°F (-10°C up to +80°C)
<b>Ambient temperature</b>	max. 131°F (+55°C)
<b>Viscosity</b>	ca. 21 cSt
<b>Operating voltage</b>	24/DC 24/220-230 V / 50 Hz other voltages on request
<b>Voltage tolerance</b>	± 10%
<b>Cycling rate</b>	ca. 80/min
<b>Duty cycle</b>	100% continuous rating
<b>Electrical connection</b>	Cable plug (part of the delivery)
<b>Protection class</b>	IP65 with cable plug
<b>Installation</b>	as required, preferably with actuator upright

Technical data

Orifice [mm]	C <sub>v</sub> value water [GPM]	Port connection	Pressure range		Electrical power consumption			Response times		Weight [kg]
			AC [PSI]	DC [PSI]		Inrush	Hold	Opening [ms]	Closing [ms]	
5.0	0.702	G 1/4	14.5 – 3625	14.5 – 2900	AC	85 VA	48 VA/20 W	100	300	1.2
8.0	1.17	G 3/8	14.5 – 3625	14.5 – 3045				...	...	1.4
12.0	3.042	G 1/2	14.5 – 3625	14.5 – 2320	DC	20 W	20 W	200	500	1.95

C<sub>v</sub> value [gpm]: Flow rate value for water, measured at 68°F (+20°C) and 1 PSI pressure differential over a fully opened valve.

Pressure data [PSI]: Overpressure with respect to atmospheric pressure

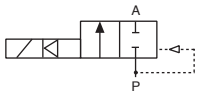
Response times [ms]: measured at valve outlet at 87 PSI and 68°F (+20°C)

Opening: pressure build-up 0 ... 90 %

Closing: pressure relief 100 ... 10 %

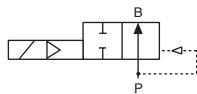
Circuit functions of the valve

Circuit function A



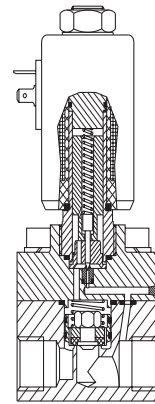
2/2-way valve,  
servo-assisted,  
normally closed,  
with servo-piston

Circuit function B

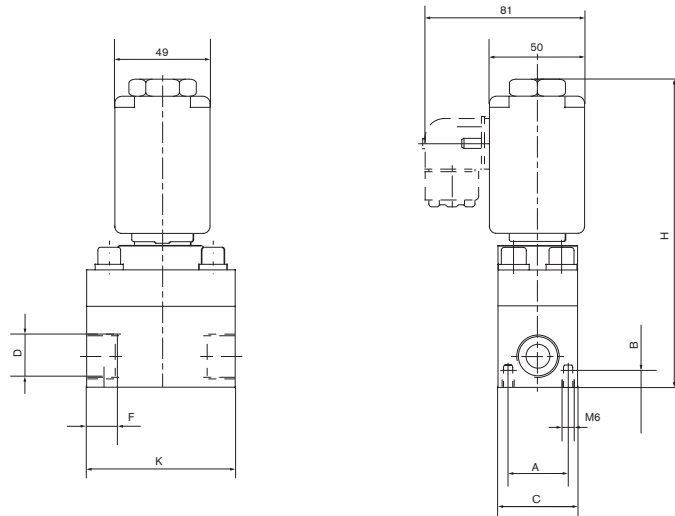


2/2-way valve,  
servo-assisted,  
normally open,  
with servo-piston

Schematic diagram



Dimensions [mm]



DN	D	A	B	C	F	H	K
5.0	G 1/4	30	12	∅ 50	8	126	∅ 50
8.0	G 3/8	29	8	∅ 40	8	126	∅ 65
12.0	G 1/2	29	8	∅ 40	14	153	∅ 75

## Ordering chart for valves (other versions on request)

Circuit function	Orifice [mm]	Port connection	C <sub>v</sub> value water [GPM]	Pressure range [PSI]	Body material	Seal material	Voltage / frequency [V/Hz]	Item no.
A	5.0	G 1/4	0.702	14.5 – 2900	Brass	PEEK/FKM	24/DC	002 366
				14.5 – 3625	Brass	PEEK/FKM	220-230/50	002 367
	8.0	G 3/8	1.17	14.5 – 3045	Brass	PEEK/FKM	24/DC	002 369
				14.5 – 3625	Brass	PEEK/FKM	24/50	132 436
							230/50	002 370
	12.0	G 1/2	3.042	14.5 – 3625	Stainless steel	PCTFE/FKM	24/DC	000 520
							24/50	134 690
				14.5 – 2320	Brass, nickel-plated	PTFE/FKM	220-230/50	000 422
							24/DC	006 725
24/50							000 284	
			220-230/50	000 455				

- Circuit function B (normally open) and EEx ed IIC T4 model on request
- For spare part kit, please refer to Spare Part Catalogue.