



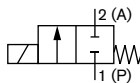
## 2/2-way solenoid valve for railway applications

- Direct acting and separated medium
- Integrated reduction of power
- With service friendly manual override
- Normally closed (NC) and normally open function
- KTW and W270 certified for drinking water

The direct-acting valve is delivered with circuit function, normally closed. The solenoid actuator is separated from the medium by a double PTFE seal with a small ventilated space. The valve is used for shut-off, dosing, filling and ventilating medium where low pressures are applicable; also suitable for use in technical vacuum.

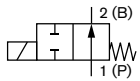
### Circuit function A (CFA)

2/2 way direct-acting solenoid valve, normally closed



### Circuit function B (CFB)

2/2 way direct-acting solenoid valve, normally open



Technical data	
<b>Body material</b>	Brass
<b>Seal material</b>	EPDM
<b>Medium</b>	Neutral liquids e.g drinking water or neutral gases e.g compressed air
<b>Medium temperature</b>	-30...+ 80 °C
<b>Ambient temperature</b>	-30...+70 °C
<b>Viscosity</b>	100...21 mm <sup>2</sup> /s
<b>Operating voltages</b>	24 V UC <sup>1</sup> (36 V UC on request) 110 V UC 230 V UC
<b>Voltage tolerance</b>	±30 %
<b>Cycling rate</b>	Max. 6/min with UC
<b>Duty cycle</b>	ED 100 %
<b>Electrical connection</b>	Cable plug (supplied as standard)
<b>Protection class</b>	IP65 with cable plug
<b>Coil insulation class</b>	H
<b>Installation</b>	As required, preferably with actuator upright
<b>Max. system pressure in flow direction</b>	8 bar (switching pressure max. 3 bar)
<b>Response times [ms]</b>	Measured at valve outlet at 6 bar and +20 °C.
Opening	Pressure relief 0 90 %
Closing	Pressure relief 100 to 10 %

<sup>1</sup> UC - Universal Current, AC and DC possible.

### Flow rate: Kv value water [m<sup>3</sup>/h]

Measured at +20 °C, 1 bar pressure at valve inlet and free outlet.

### Pressure values [bar]

Measured as overpressure to the atmospheric pressure

## Technical data (cont.)

Orifice [mm]	K <sub>v</sub> value water [m <sup>3</sup> /h]	Port connection	Pressure range [bar]		Electrical	power consumption		Response times (ms)		Weight [kg]
			CFA	CFB		Inrush	[VA]	Opening	Closed	
10	2.0	G 3/8	0...3	0...2	UC	100 VA 100 W	9 W (after 500 ms)	10...20	40...60	1.4
15	4.5	G 1/2	0...1	0...1						
20	6.0	G 3/4	0...0.5	0...0.5						

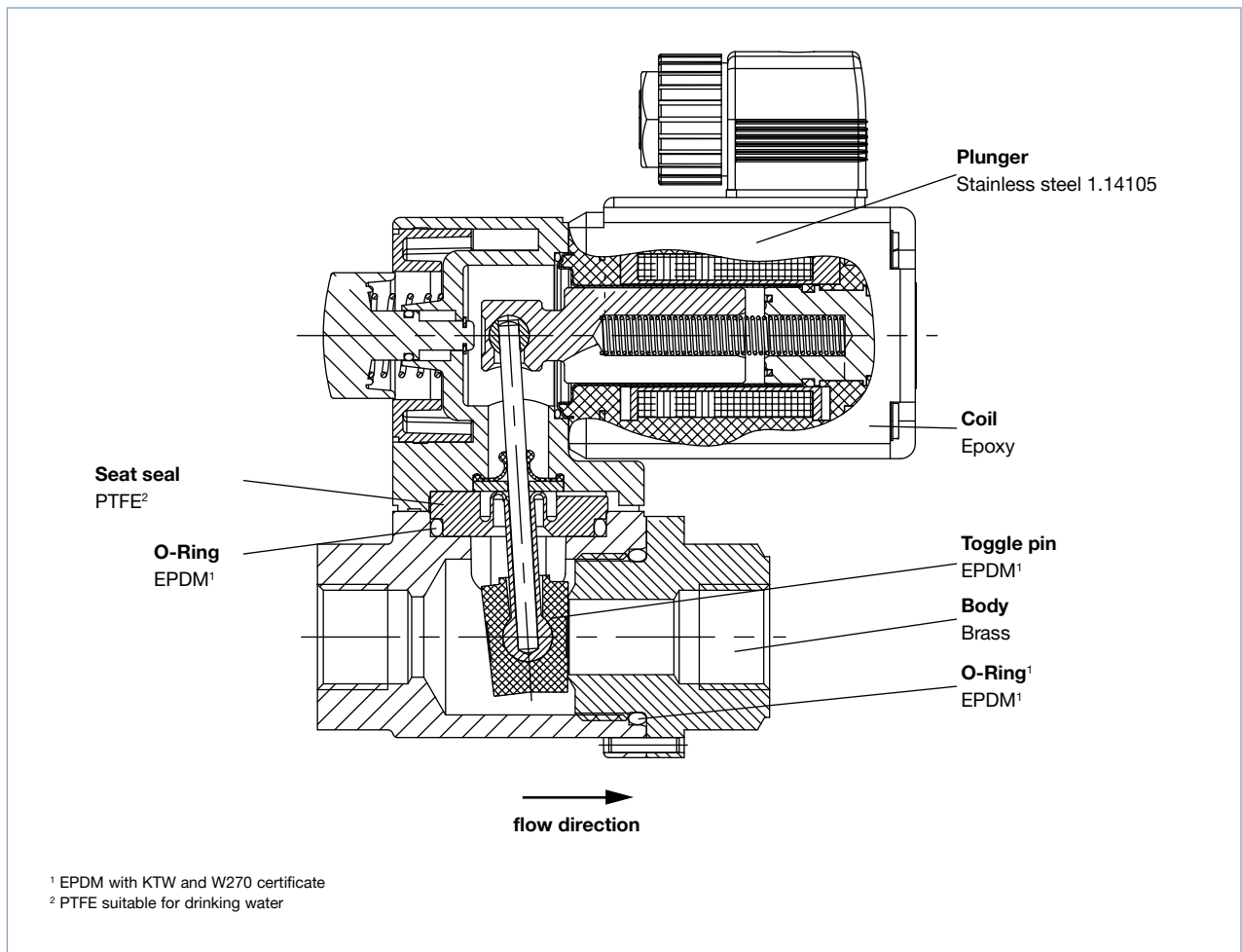
Power input at 30 % raised operating voltage

31.2 V 7.60 A

143.0 V 1.80 A

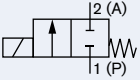




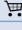
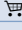
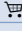


299.0 V 0.76 A

## Materials




## Ordering chart for valves (other versions on request)

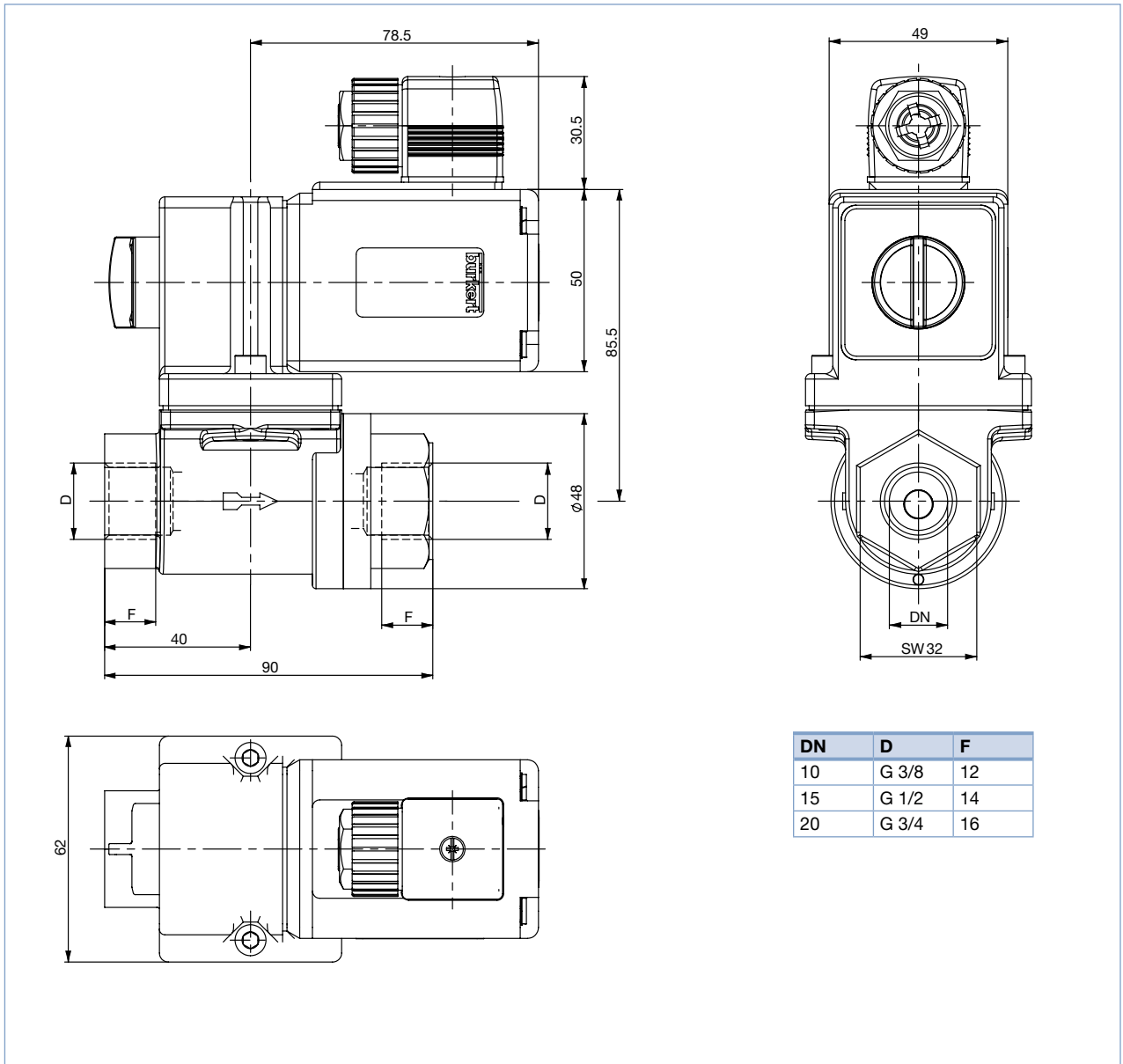
### All valves with manual override, brass body, and cable plug

Circuit function	Orifice [mm]	Port connection	K <sub>v</sub> value water [m <sup>3</sup> /h]	Pressure range [bar]	Voltage/Frequency [V/Hz]	Item no.
	10	G 3/8	2.0	0...3	24/UC	246791 
					110/UC	246792 
					230/UC	246793 
	15	G 1/2	4.5	0...1	24/UC	246789 
					110/UC	242884 
					230/UC	246790 
	20	G 3/4	6.0	0...0.5	24/UC	239361 
					110/UC	239348 
					230/UC	246787 

### Further versions on request

 **Electrical connection**  
with electrical position feedback

## Dimensions [mm]



To find your nearest Bürkert facility, click on the orange box →

[www.burkert.com](http://www.burkert.com)

In case of special application conditions,  
please consult for advice.

Subject to alterations  
© Christian Bürkert GmbH & Co. KG

1712/1\_EU-en\_00895329